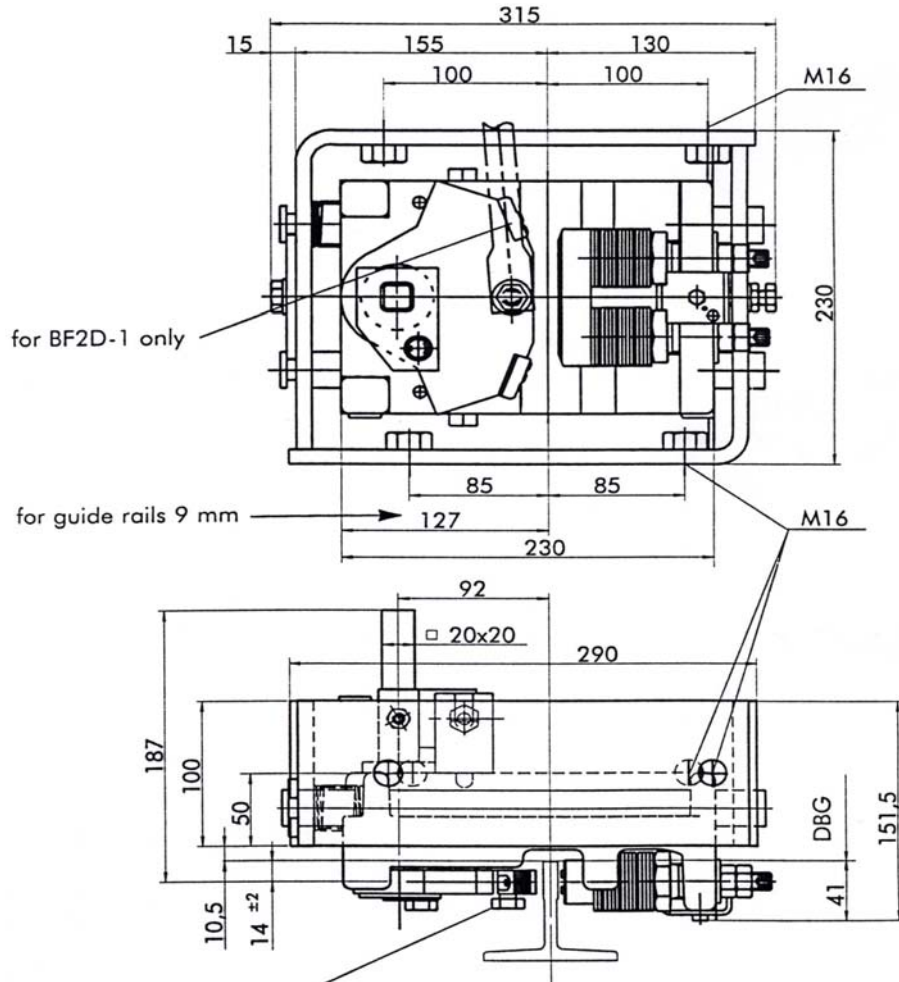


Conforms to the requirements of EN81 - 1 / 2

BF1D-1 = Mono Dir
BF2D-1 & BF2D-2 = Bi - Dir

Housing type "U" shown for mounting below car

Housing type "Z" available for installation between car sling uprights shown on sheet ref : 05-08



Pull rod attached here

Length of connecting rod required is $DBG - 274$)
Connecting rod material is 20 x 20 x 2 sq section)

Not supplied by SLS
Not supplied by SLS

Suitable for guide widths of 9 - 16mm

Included in supply :- 2 x safety gear blocks with safety gear switch
(for manual reset on safety gear)
Housing, type "U" (for mounting below car)
Pull rod

For range of application see data sheet ref: 05-09