



**SASSI**  
LIFT SYSTEMS

PRODUCT GUIDE | 2025

# WHO ARE SLS...

Sassi Lift Systems Ltd are specialists in the supply of Geared and Gearless traction machines and components for modernisation, repair and New Lift projects Nationwide, with a strong ethos and proven record of Customer Service and satisfaction ensuring that whatever your project you get the correct equipment that is 'fit for purpose' - first time every time!

## HOW SLS CAN HELP YOU...

- ✓ Technical support for all aspects of your Lift Installation, with experts on hand from your initial inquiry, through the order stage to ensure the correct equipment is supplied that meets all necessary regulatory requirements and exceeds your expectations.
- ✓ We ensure every machine supplied is fully compliant with all the necessary standards.
- ✓ Where necessary we will carry out machine room site surveys to support and assist you to select the best solution for the application.
- ✓ We give help and advice on site access issues, delivery options and mechanical handling needs taking into consideration any Health & Safety requirements which can be easily overcome by using our proven Disassembly and on-site Reassembly service.
- ✓ Providing ISO9001 Design approved CAD drawings for any machine steelwork we supply.
- ✓ As Standard we offer a comprehensive 5 year warranty on our entire range of SASSI Machines.
- ✓ Extensive after Sales Service with effective response times.
- ✓ Spare parts availability in excess of 20 years after production has ceased.
- ✓ SLS maintain an active working relationship with Councils, Consultants and specifiers to ensure consistency of supply for ongoing client framework agreements.



0026

Certificate No 14990-QMS-001 ISO9001  
Certificate No 14990-QMS-001 ISO45001

All products supplied by SLS comply with current EN81 20/50 regulations and recast directive 2014/33/EU. SLS believe that quality is paramount, and this philosophy is embraced by all of our staff working to maintain our UKAS Accreditations to ISO 9001:2015 & BS OHSAS 18001:2007.

# CONTENTS

## ■ GEARLESS MACHINES

G200 T1/TS	4
G200 TC	6
G300 T0/TS	8
G300 T1	10
G300 T2	12
G300 TC	14
G400 T1	16
G400 T2	18
G400 T3 + DQO3	20
G500 T1	22
G500 T2	24
G525 T1	26
G525 T2	28

## ■ GEARED MACHINES

MODY	30
LINCE	32
LEO	34
S38/S38S	36
MF48	38
S48/S48S	40
S58	42
TORO	44
MF84	46
MF94	48
MB94	50
MB95	52
MB108	54
LEO DRUM	56
TORO DRUM	58
MF84 DRUM	60
LEO EXTENDED SHAFT	62
MF48 EXTENDED SHAFT	63
TORO EXTENDED SHAFT	64

MF84/MF94 EXTENDED SHAFT	65
GEARED ACCESSORIES	66
STANDARD LIFE EXPECTANCY	68
RAFTS / GUARDS	70
WIRE ROPES	72

## ■ COMPONENTS

DIVERTERS - SUPPORT PLATES	74
DIVERTERS - KEEPER PLATES	76
GUIDE EQUIPMENT	78
SMS RED-E	80
SMS RED-R	81
SMS RED-G	82
SMS CONTROLLERS	83
SMS COP AND LOP	84
SMS DISPLAY	86
SMS PUSH BUTTON	87
SMS LIFT DOOR CURTAIN	88
OVERSPEED GOVERNORS	90
TENSION WEIGHTS	91
SAFETY GEAR - VG2A	92
SAFETY GEAR - VG4	94
SAFETY GEAR - VG5	96
SAFETY GEAR - VG6	98
SAFETY GEAR - VG8	100
OLEO BUFFERS	102
AT40 CAR DOOR	104

## ■ SLS SUPPORT

SLS BASIC SPLIT	106
SLS TOTAL SPLIT	107
SUPPORT AND SERVICES	108
IF YOU'VE BEEN HERE...	109
NOTES	110



0.63 > 1.60 M/S  
RATED SPEED



2-4 PERSON  
DUTY LOAD



A3  
COMPLIANT



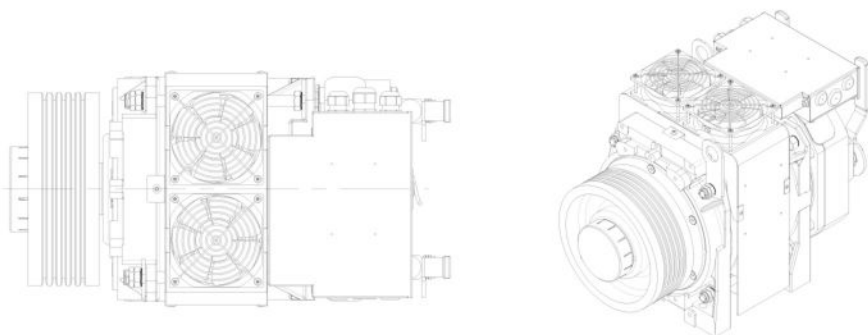
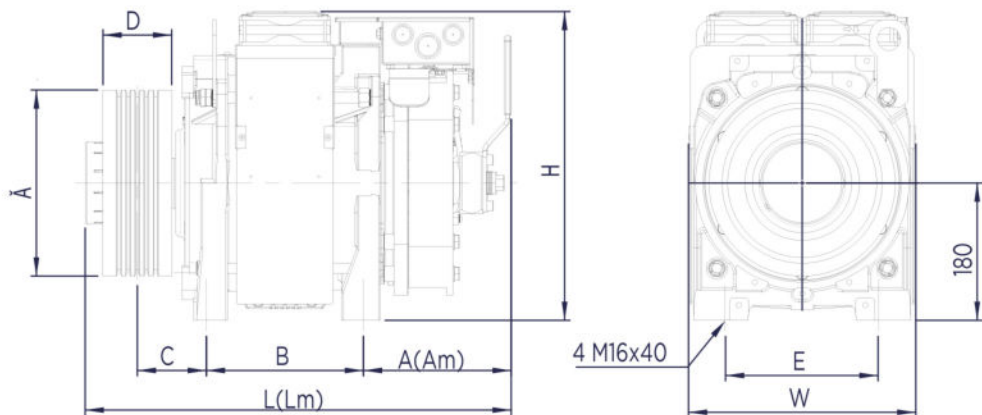
DESIGNED &  
MANUFACTURED  
IN HOUSE



5 YEAR  
WARRANTY

**DATA**

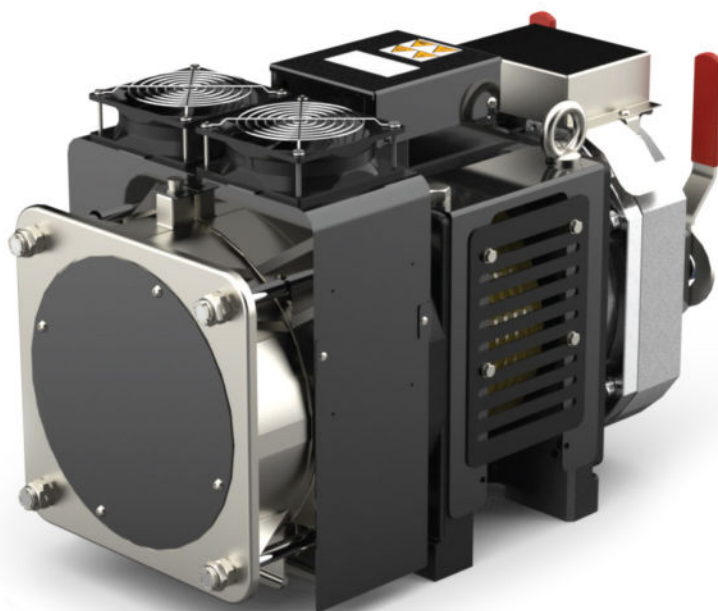
Max static load	2500Kg
Nominal torque	190Nm - 230Nm
Max duty load	1/1 300Kg   2/1 630Kg
Cabin speed	0.63 > 1.60m/s
Sheave diameter	120mm > 320mm



Complete machine weight - up to 160Kg

DIMENSION KEY										
A	L	Am	Lm	B	C	E	W	H	D	Ä
147	513	192	558	206	90.5	200	296	405	90	120-140-160-210-240
	520		565		105.5				120	120-140-160
	513		558		95.5				120	210-240-320

Am/Lm = dimensions with lever for hand release



0.63 > 1.60 M/S  
RATED SPEED



4-6 PERSON  
DUTY LOAD



A3  
COMPLIANT

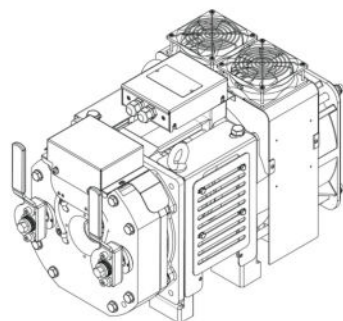
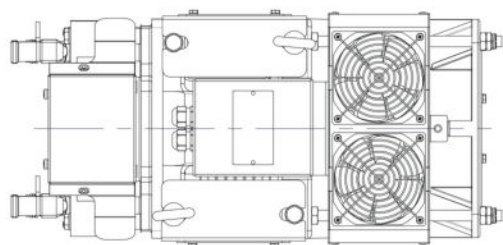
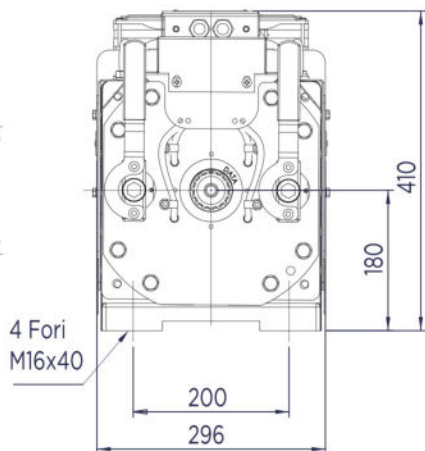
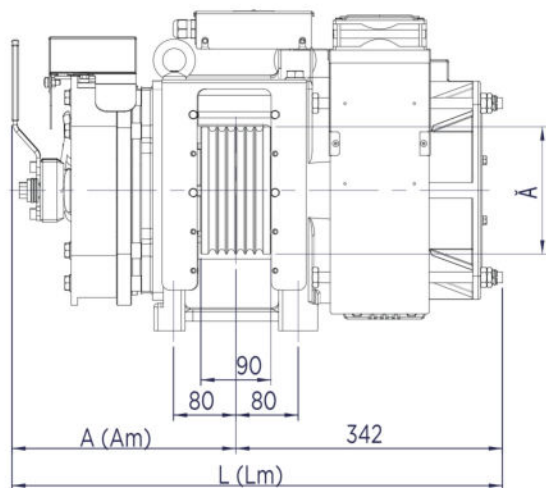


DESIGNED &  
MANUFACTURED  
IN HOUSE



5 YEAR  
WARRANTY

DATA	
Max static load	2500Kg
Nominal torque	190Nm - 230Nm
Max duty load	1/1 300Kg   2/1 630Kg
Cabin speed	0.63 > 1.60m/s
Sheave diameter	120mm > 240mm



Complete machine weight - up to 160Kg

DIMENSION KEY				
A	L	Am	Lm	Ø
240	285	582	627	160-210-240

Am/Lm = dimensions with lever for hand release



0.63 > 1.60 M/S  
RATED SPEED



6-8 PERSON  
DUTY LOAD



A3  
COMPLIANT



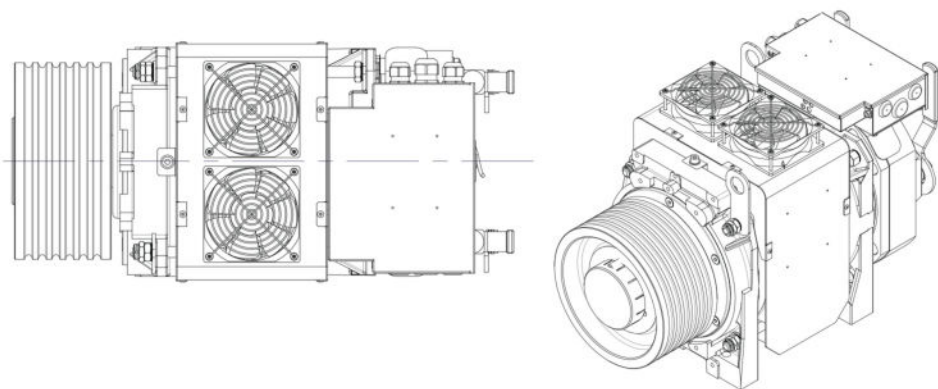
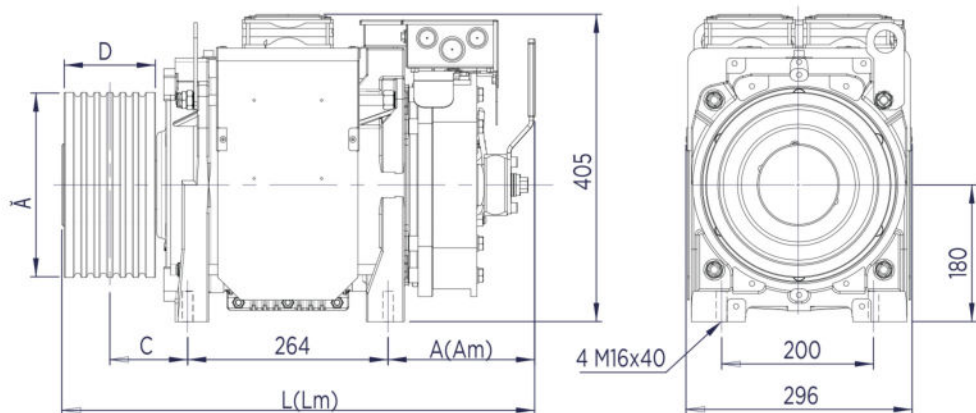
DESIGNED &  
MANUFACTURED  
IN HOUSE



5 YEAR  
WARRANTY

**DATA**

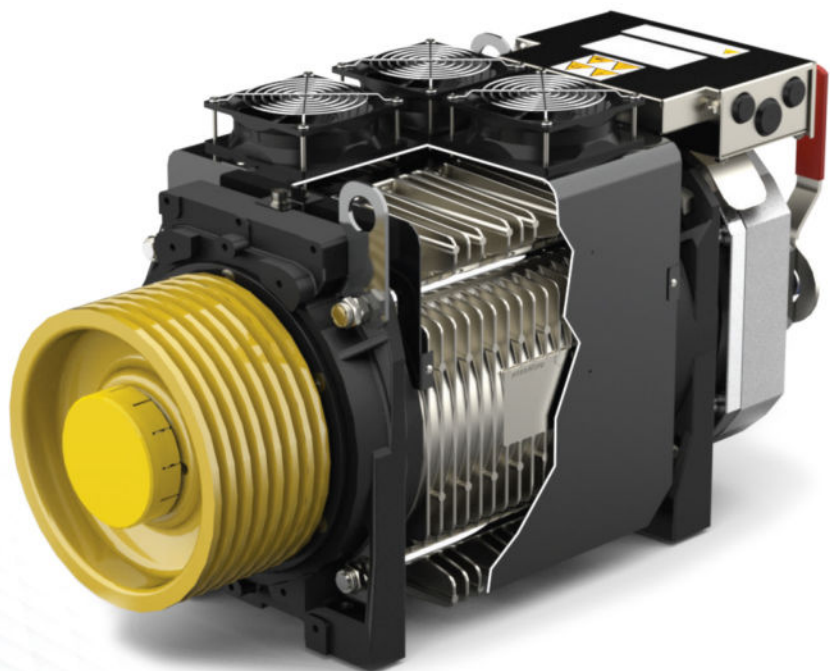
Max static load	2750kg
Nominal torque	320Nm
Max duty load	1/1 525kg   2/1800kg
Cabin speed	0.63 > 1.60m/s
Sheave diameter	120mm > 400mm



Complete machine weight - up to 200Kg

DIMENSION KEY						
A	L	Am	Lm	C	D	Ä
147	577	192	622	95.5	120	210-240-320
147	577	192	622	105.5	120	120-140-160
147	605	192	650	110.5	150	240-320

Am/Lm = dimensions with lever for hand release



0.63 > 1.60 M/S  
RATED SPEED



6-8 PERSON  
DUTY LOAD



A3  
COMPLIANT



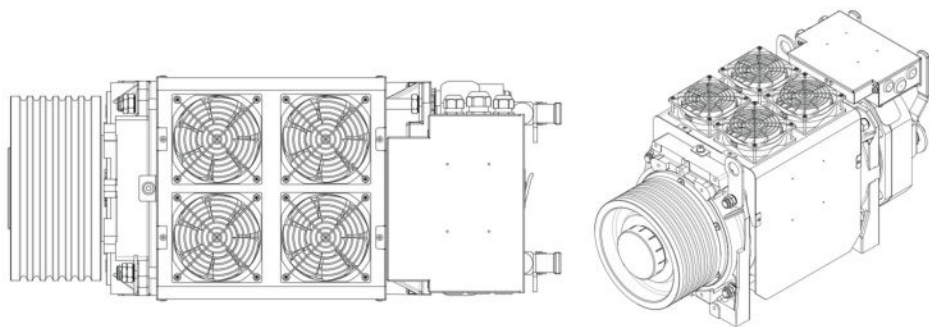
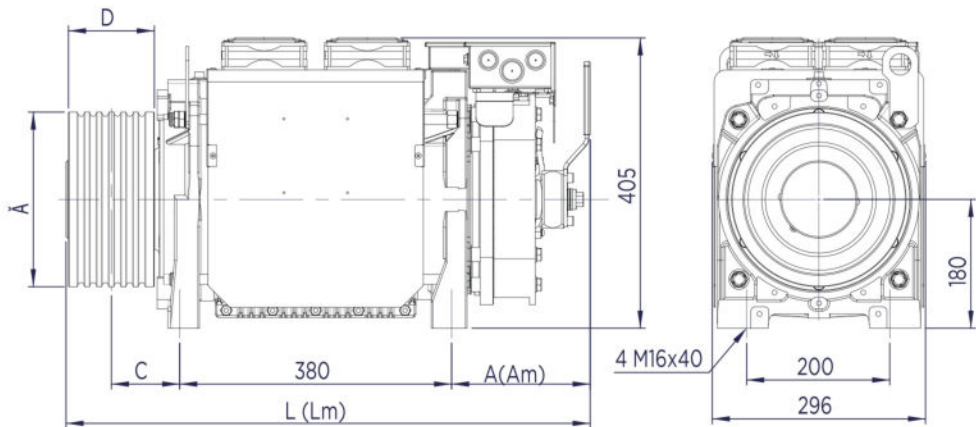
DESIGNED &  
MANUFACTURED  
IN HOUSE



5 YEAR  
WARRANTY

**DATA**

Max static load	2750kg
Nominal torque	430Nm
Max duty load	1/1 630kg   2/1 1000kg
Cabin speed	0.63 > 1.60m/s
Sheave diameter	120mm > 400mm



Complete machine weight - up to 200Kg

DIMENSION KEY						
A	L	Am	Lm	C	D	Ä
147	965	192	740	95.5	120	210-240-320-360-400
147	695	192	740	105.5	120	120-140-160
147	720	192	765	110.5	150	240-320-360-400

Am/Lm = dimensions with lever for hand release



0.63 > 1.60 M/S  
RATED SPEED



6-8 PERSON  
DUTY LOAD



A3  
COMPLIANT

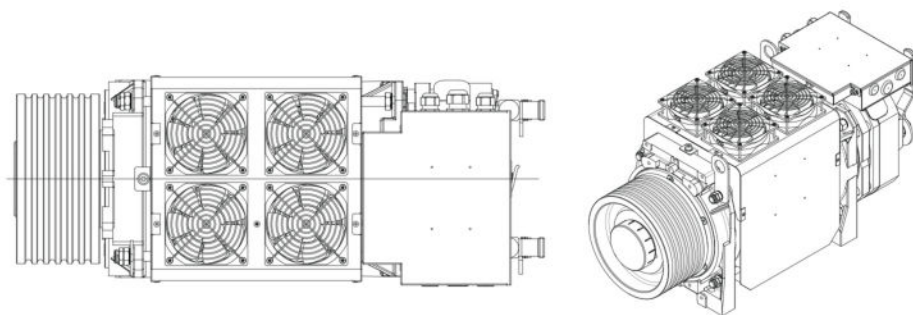
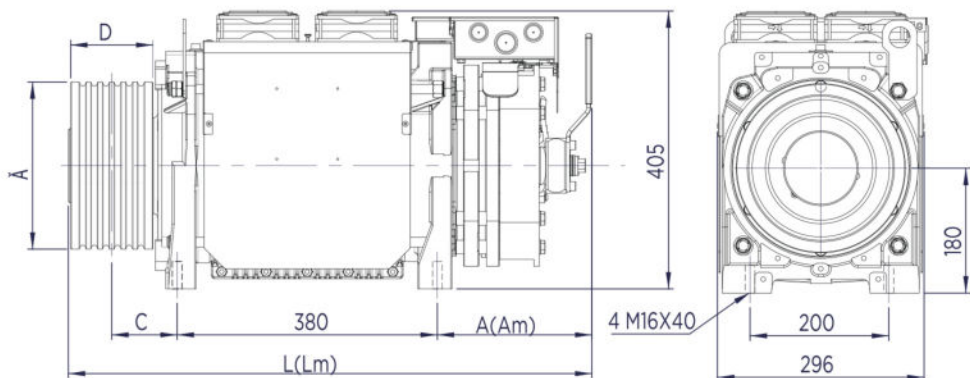


DESIGNED &  
MANUFACTURED  
IN HOUSE



5 YEAR  
WARRANTY

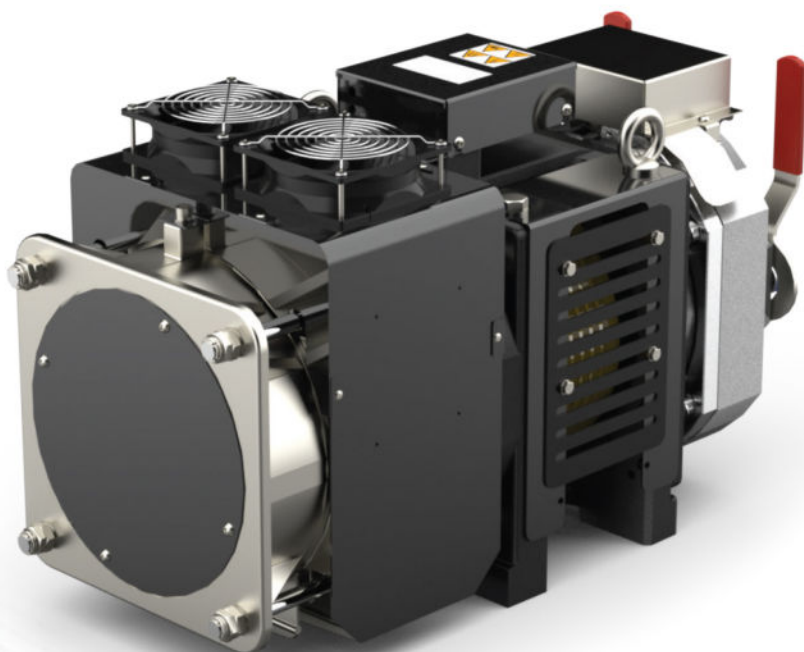
DATA	
Max static load	2750Kg
Nominal torque	520Nm
Max duty load	1/1 630Kg   2/1 1250Kg
Cabin speed	0.63 > 1.60m/s
Sheave diameter	120mm > 400mm



Complete machine weight - up to 200Kg

DIMENSION KEY						
A	L	Am	Lm	C	D	Ä
178	726	223	771	95.5	120	210-240-320-360-400
178	726	223	771	105.5	120	120-140-160
178	751	223	796	110.5	150	240-320-360-400

Am/Lm = dimensions with lever for hand release



0.63 > 1.60 M/S  
RATED SPEED



8-10 PERSON  
DUTY LOAD



A3  
COMPLIANT

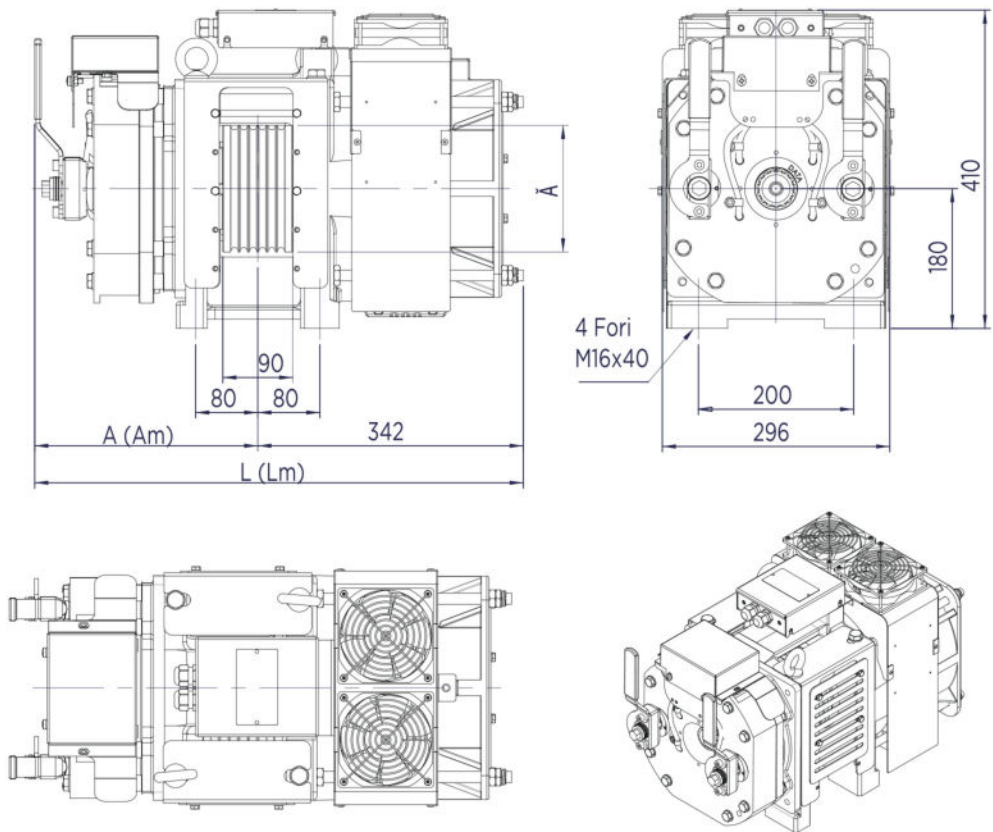


DESIGNED &  
MANUFACTURED  
IN HOUSE



5 YEAR  
WARRANTY

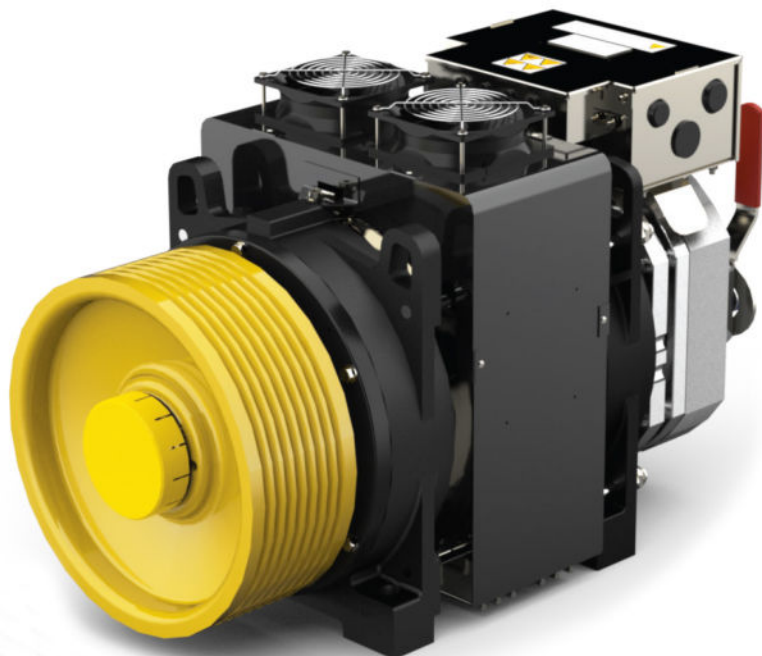
DATA	
Max static load	2750Kg
Nominal torque	320Nm
Max duty load	1/1 630Kg   2/1800Kg
Cabin speed	0.63 > 1.60m/s
Sheave diameter	120mm > 240mm



Complete machine weight - up to 200Kg

DIMENSION KEY				
A	L	Am	Lm	Ø
245	640	290	685	160-210-240

Am/Lm = dimensions with lever for hand release



0.63 > 2.50 M/S  
RATED SPEED



8-16 PERSON  
DUTY LOAD



A3  
COMPLIANT

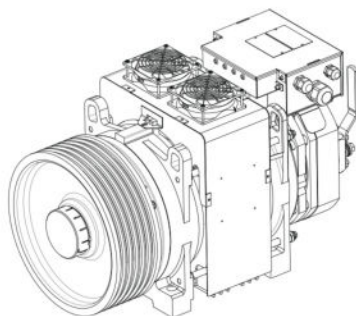
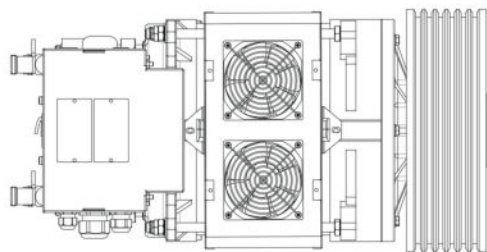
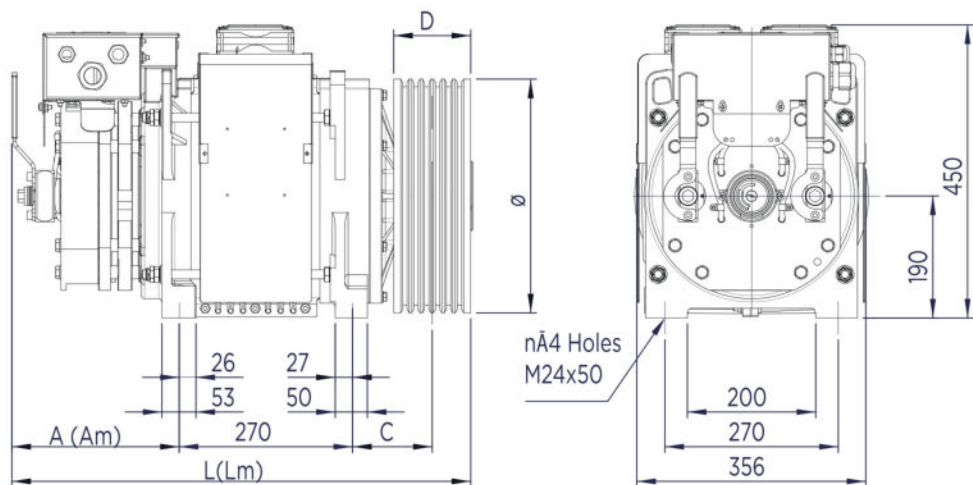


DESIGNED &  
MANUFACTURED  
IN HOUSE



5 YEAR  
WARRANTY

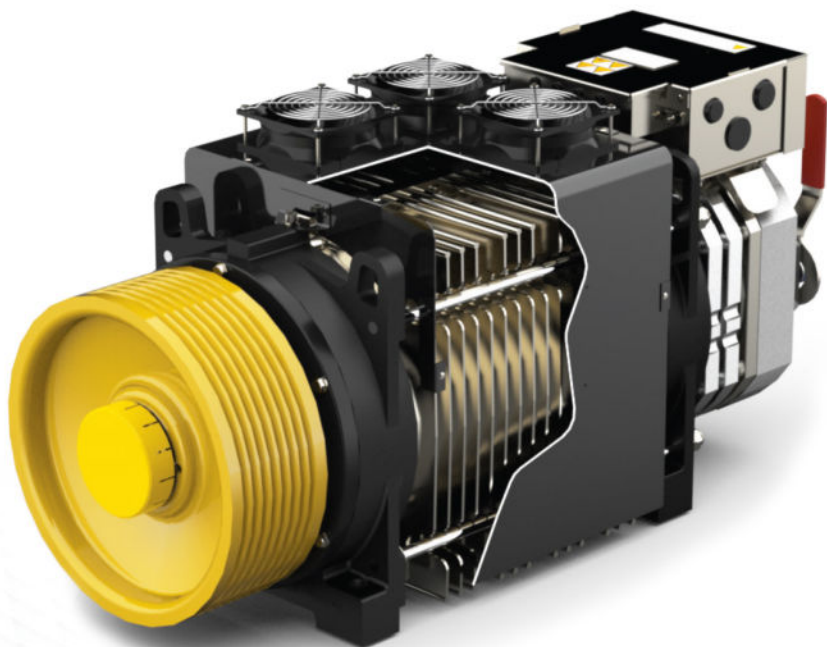
DATA	
Max static load	3500Kg
Nominal torque	640Nm
Max duty load	1/1 630Kg   2/1 1250Kg
Cabin speed	0.63 > 2.50m/s
Sheave diameter	210mm > 600mm



Complete machine weight - up to 356Kg

DIMENSION KEY						
A	Am	L	Lm	D*	C	Ø
215	260	670	715	120	124	210 - 240* - 320* - 360* - 400* 450 - 480 - 520 - 560 - 600
* Ø = 240/320/360/400 - * If "D" = 150 Then " C " = 139 - "L" = 700 - "Lm" = 745						

Am/Lm = dimensions with lever for hand release



0.63 > 2.50 M/S  
RATED SPEED



8-25 PERSON  
DUTY LOAD



A3  
COMPLIANT



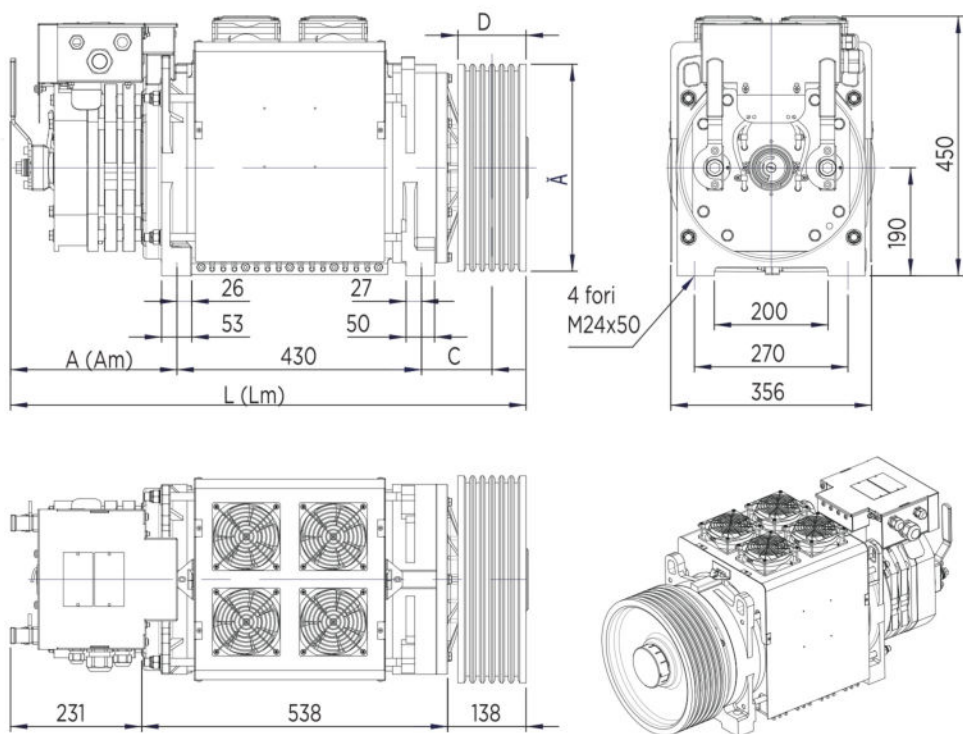
DESIGNED &  
MANUFACTURED  
IN HOUSE



5 YEAR  
WARRANTY

**DATA**

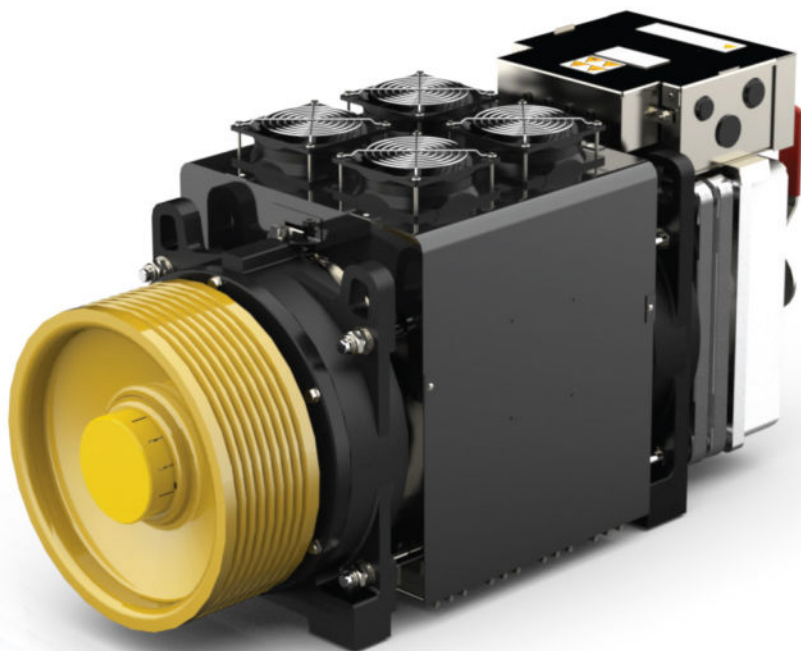
Max static load	4500Kg
Nominal torque	1020Nm
Max duty load	1/1 1000Kg   2/1 2000Kg
Cabin speed	0.63 > 2.50m/s
Sheave diameter	210mm > 650mm



Complete machine weight - up to 356Kg

DIMENSION KEY						
A	Am	L	Lm	D*	C	Ø
247	292	862	907	120	124	240* - 320* - 360 - 400 - 450 - 480 - 520 - 560 - 600 - 650
* Ø=240/320 - *If "D" = 150 Then "C" = 139 - "L" = 892B2 = "Lm" = 937						

Am/Lm = dimensions with lever for hand release



0.63 > 2.50 M/S  
RATED SPEED



8-12 PERSON  
DUTY LOAD



A3  
COMPLIANT

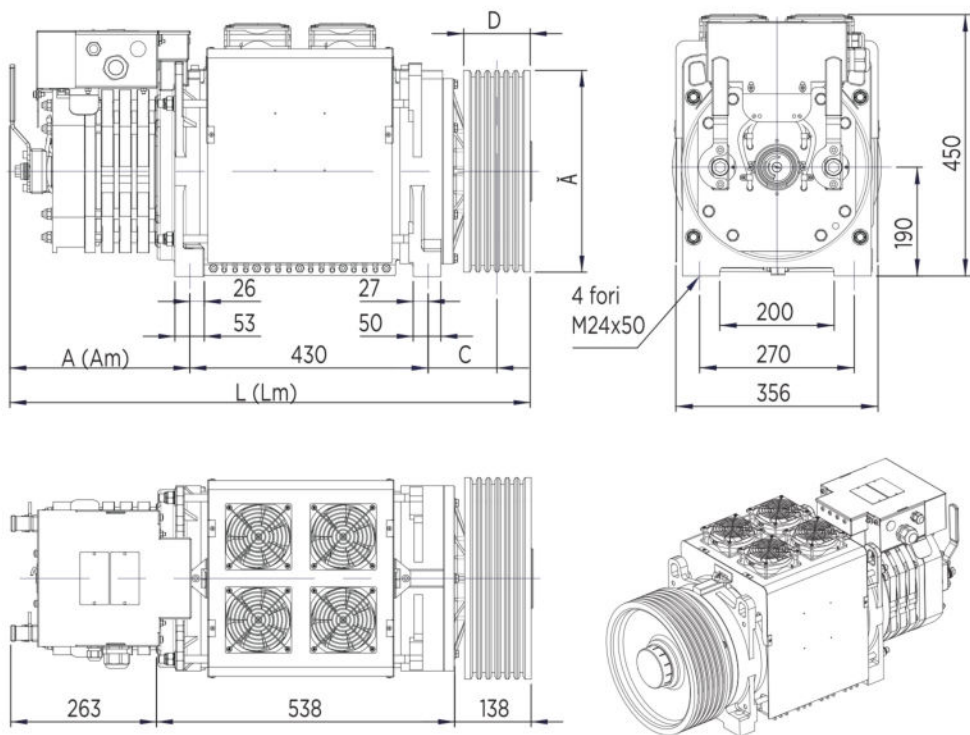


DESIGNED &  
MANUFACTURED  
IN HOUSE



5 YEAR  
WARRANTY

DATA	
Max static load	5200Kg
Nominal torque	1250Nm
Max duty load	1/1 1250Kg   2/1 2500Kg
Cabin speed	0.63 > 2.50m/s
Sheave diameter	210mm > 650mm



Complete machine weight - up to 356Kg

DIMENSION KEY						
A	Am	L	Lm	D*	C	Ø
279	324	897	942	120	124	240* - 320* - 360 - 400 - 450 - 480 - 520 - 560 - 600 - 650
* Ø=240/320 - *If "D" = 150 Then "C" = 139 - "L" = 892B2 = "Lm" = 937						

Am/Lm = dimensions with lever for hand release



0.63 > 2.50 M/S  
RATED SPEED



10-30 PERSON  
DUTY LOAD

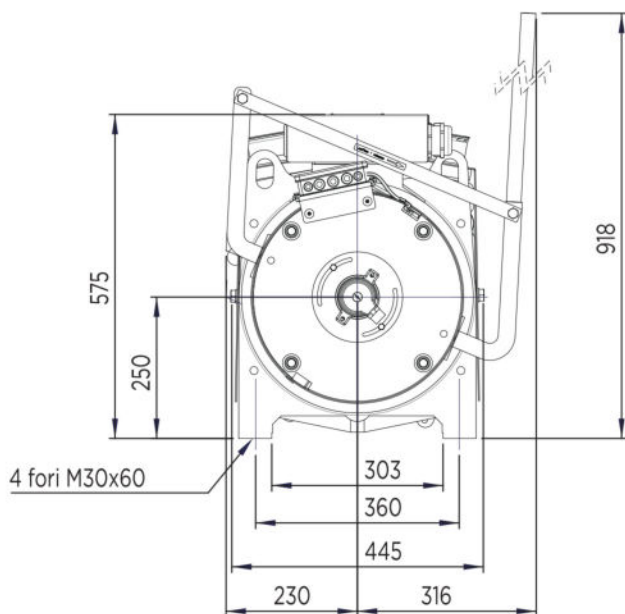
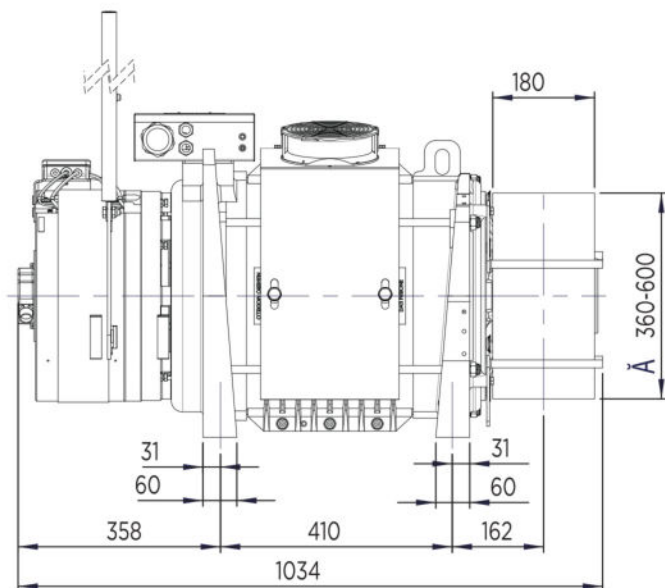


A3  
COMPLIANT



5 YEAR  
WARRANTY

DATA	
Max static load	7600Kg
Nominal torque	1600Nm
Max duty load	1/1 1250Kg   2/1 2500Kg
Cabin speed	0.63 > 2.50m/s
Sheave diameter	360mm > 650mm



Complete machine weight - up to 630Kg



0.63 > 2.50 M/S  
RATED SPEED



10-30 PERSON  
DUTY LOAD

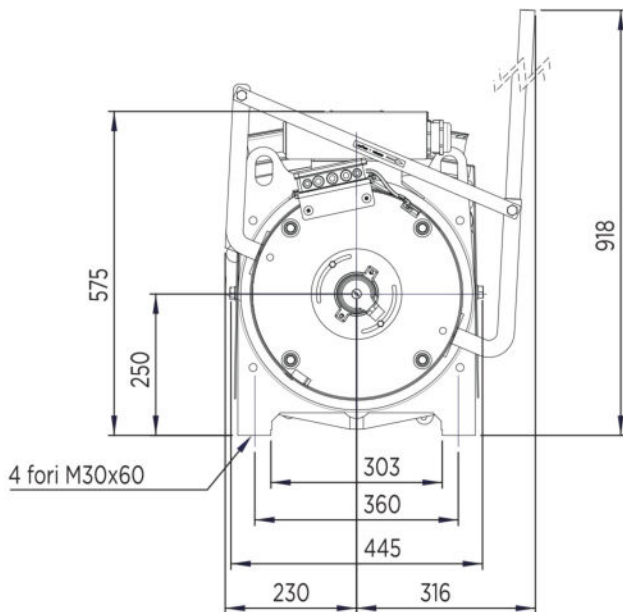
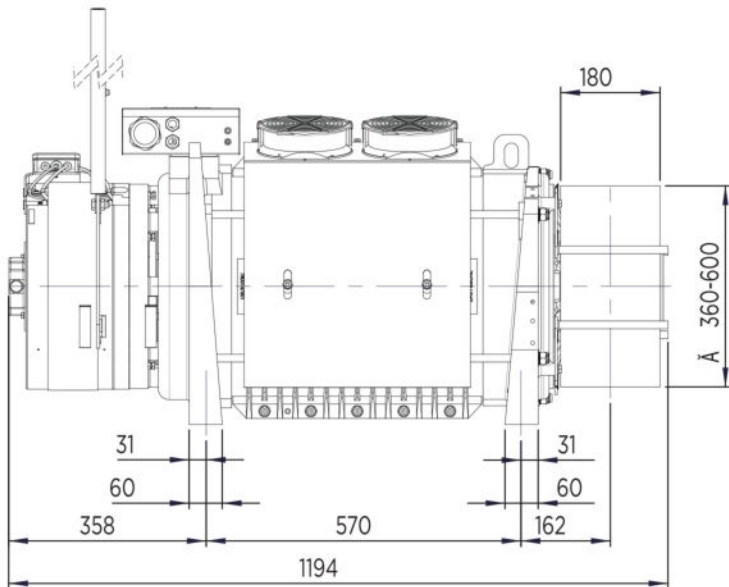


A3  
COMPLIANT

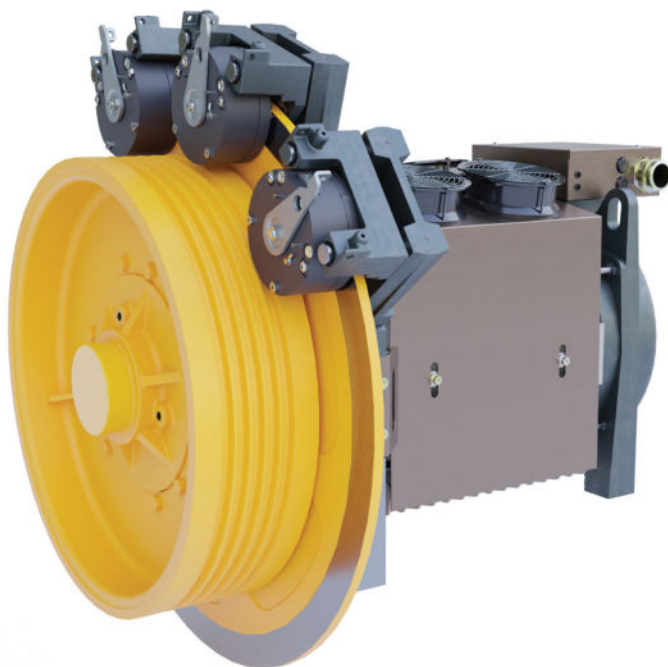


5 YEAR  
WARRANTY

DATA	
Max static load	7600Kg
Nominal torque	2220Nm
Max duty load	1/1 1600Kg   2/1 2500Kg
Cabin speed	0.63 > 2.50m/s
Sheave diameter	360mm > 650mm



Complete machine weight - up to 630Kg



0.63 > 3.50 M/S  
RATED SPEED



10-30 PERSON  
DUTY LOAD

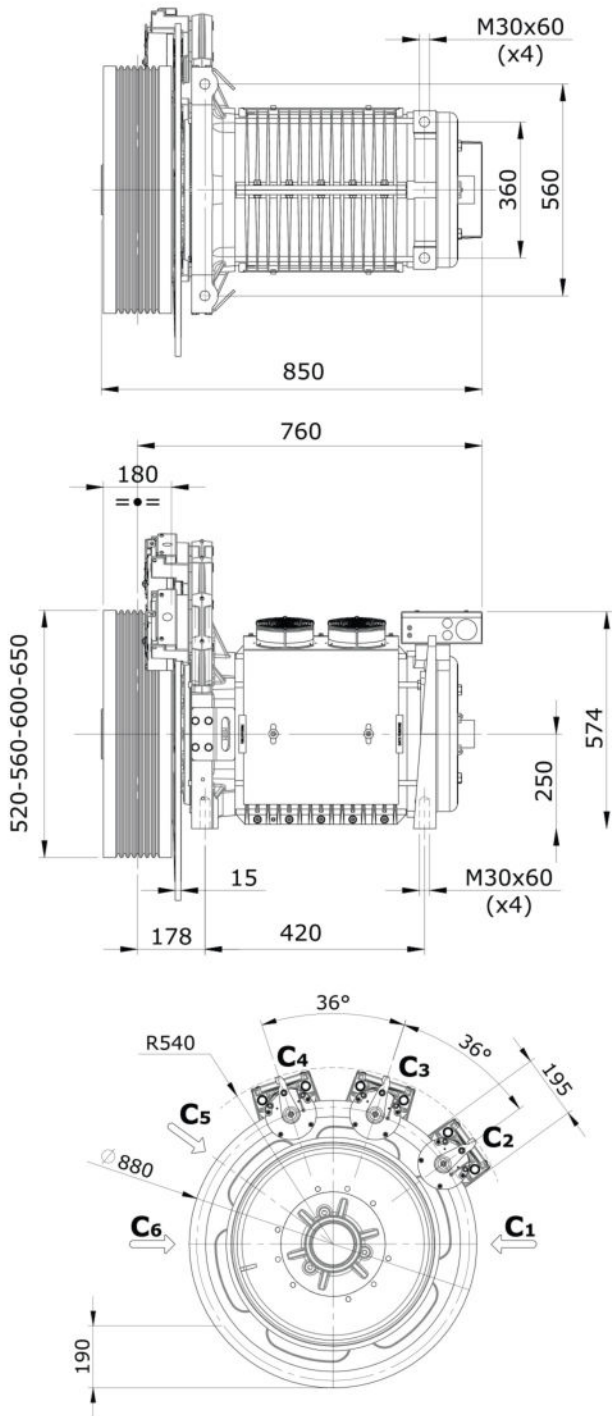


A3  
COMPLIANT

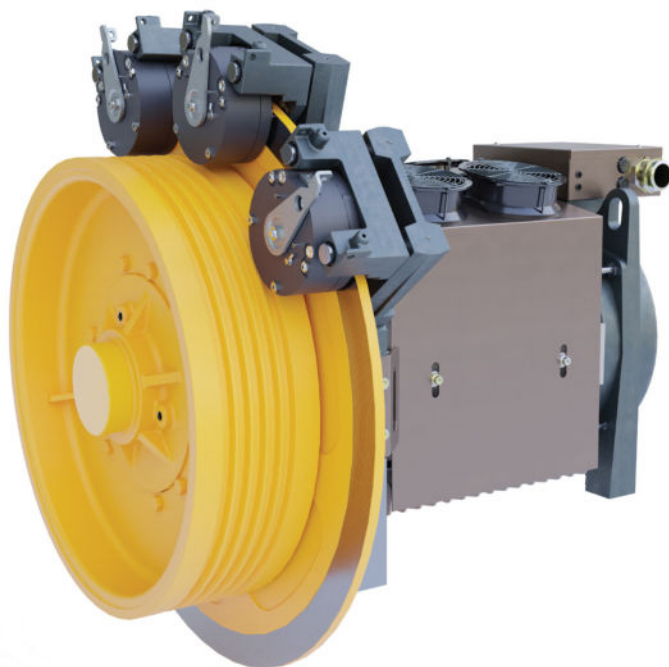


5 YEAR  
WARRANTY

DATA	
Max static load	7600Kg
Nominal torque	1600Nm
Max duty load	1/1800Kg   2/11600Kg
Cabin speed	0.63 > 3.50m/s
Sheave diameter	520mm > 650mm



Complete machine weight - up to 630Kg



0.63 > 3.50 M/S  
RATED SPEED



10-30 PERSON  
DUTY LOAD



A3  
COMPLIANT



5 YEAR  
WARRANTY

DATA	
Max static load	7600Kg
Nominal torque	2220Nm
Max duty load	1/1 1250Kg   2/1 2500Kg
Cabin speed	0.63 > 3.50m/s
Sheave diameter	520mm > 650mm





0.23 > 3.68 M/S  
RATED SPEED



4-6 PERSON  
DUTY LOAD



A3  
COMPLIANT



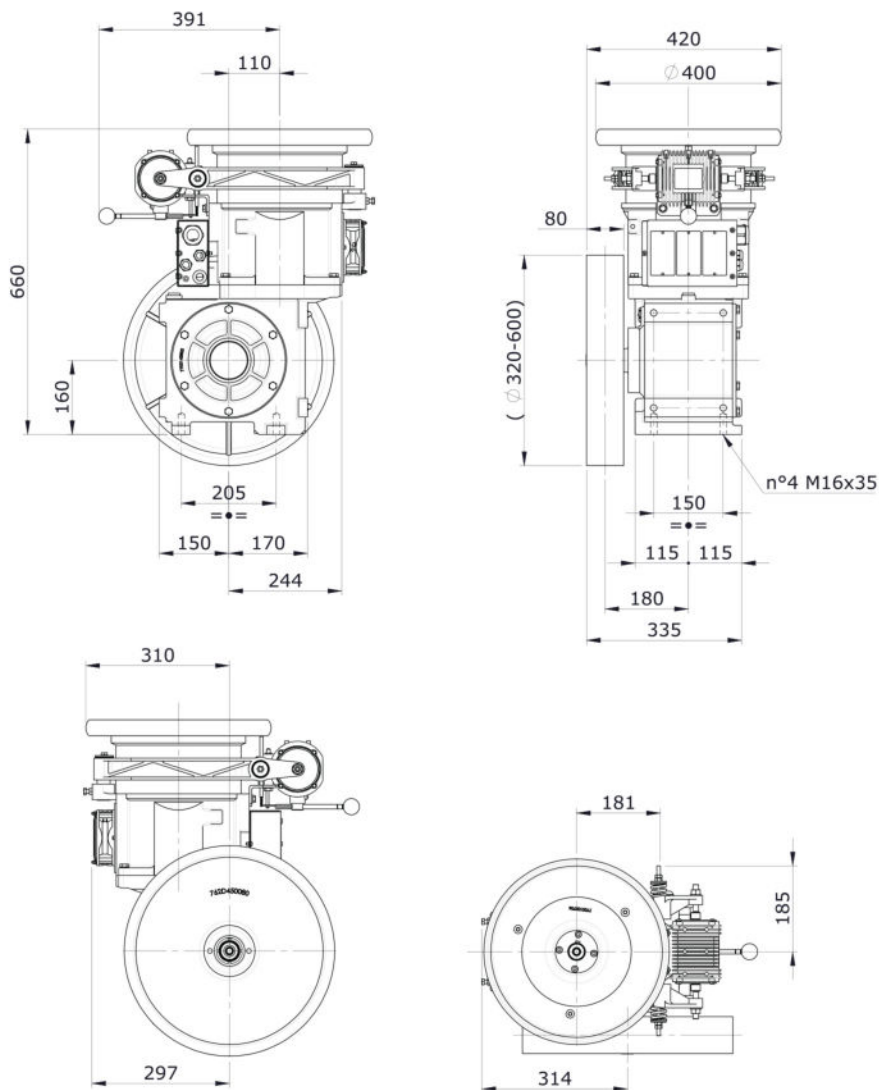
COMPACT  
DESIGN



LUBRICATED  
FOR LIFE

#### DATA

Max static load	2300Kg
Ratios	1/37 > 1/49 > 2/47 > 3/41 > 7/60
Roping	1/1   2/1
Power range VWF	2.2 > 6.6kW
Power range 4/16	3.5 > 5.5kW



Vertical MODY shown, also available in Left and Right Hand configurations.

COMPLETE WEIGHT	GEARBOX ONLY	GEAR TOP	GEAR BASE	CROWN WHEEL	MOTOR & BEDPLATE	MOTOR & STATOR CREATE	ACCESSORIES BOX
210Kg	110Kg	NA	NA	NA	NA	60Kg	50Kg

Add additional 50Kg for slow shaft brake



0.42 > 2.01 M/S  
RATED SPEED



4-6 PERSON  
DUTY LOAD



A3  
COMPLIANT



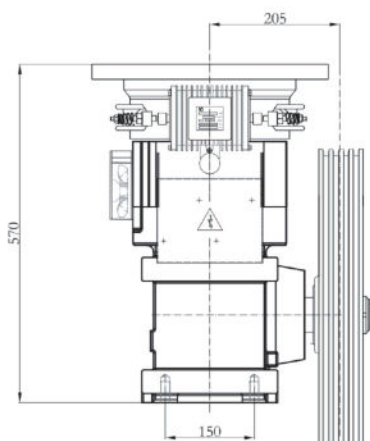
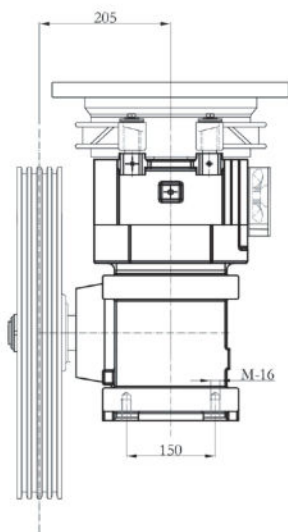
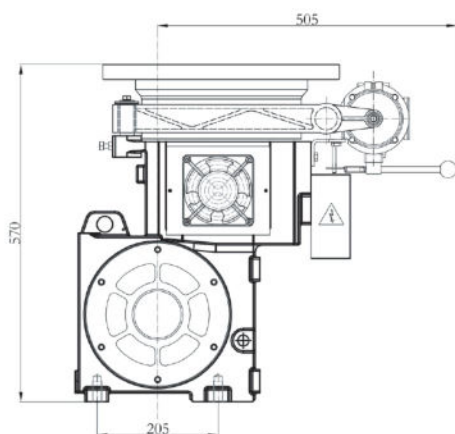
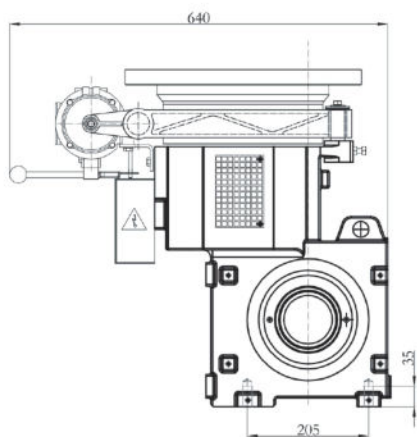
COMPACT  
DESIGN



LUBRICATED  
FOR LIFE

#### DATA

Max static load	2500Kg
Ratios	1/37 > 1/49
Roping	1/1   2/1
Power range VWF	2.2 > 5.1kW
Power range 4/16	3.5 > 4.8kW





0.50 > 3.50 M/S  
RATED SPEED



4-10 PERSON  
DUTY LOAD



A3  
COMPLIANT

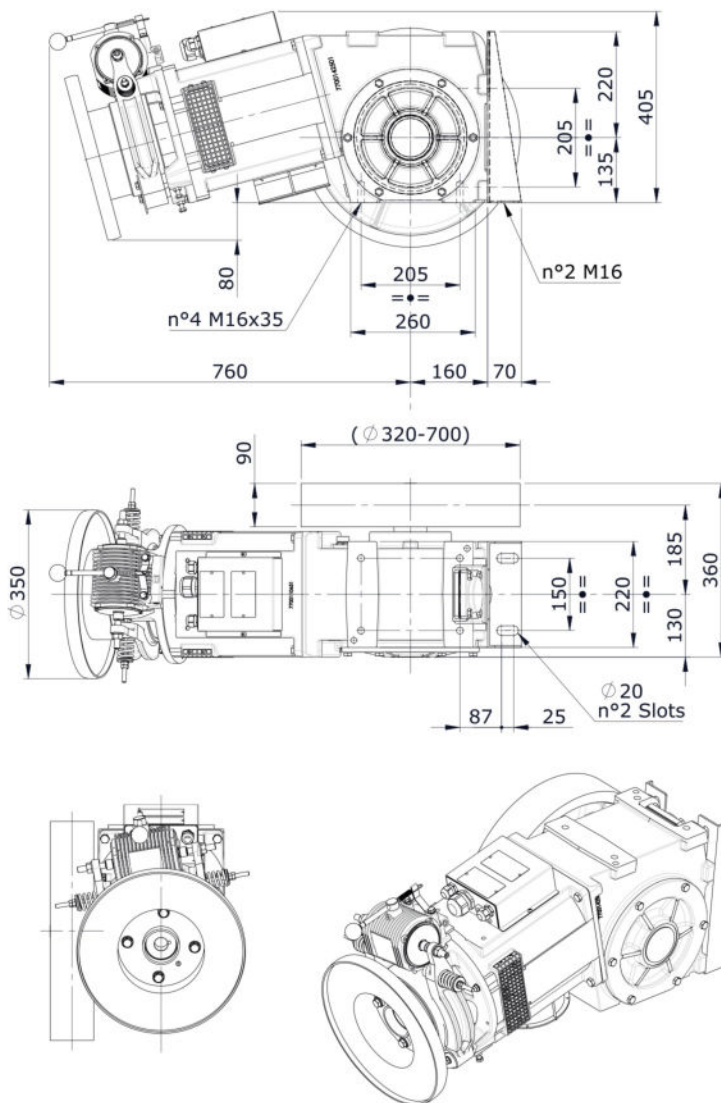


COMPACT  
DESIGN



LUBRICATED  
FOR LIFE

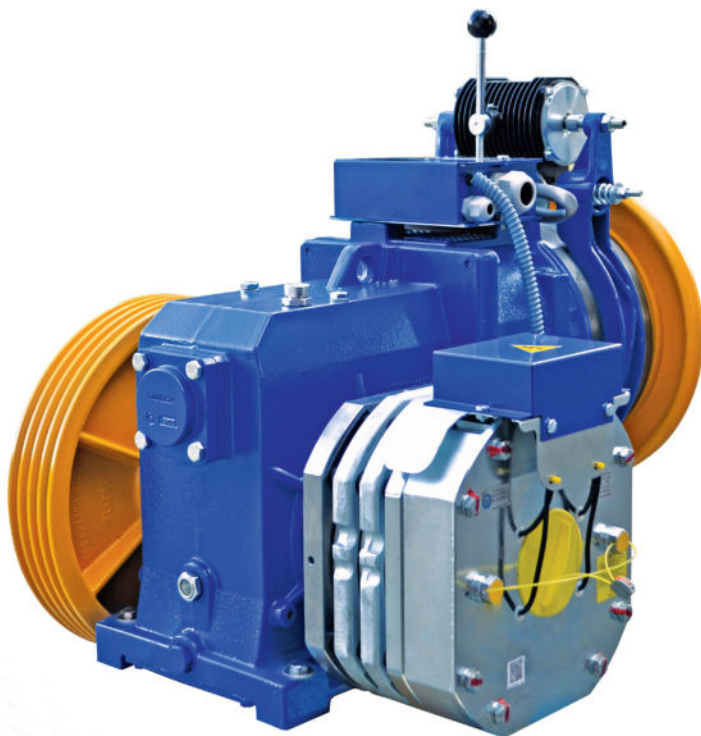
DATA	
Max static load	3000Kg
Ratios	1/71 > 1/55 > 1/45 > 2/71 > 2/57 > 3/47
Power range at 4/16 poles	3.5 > 5.5kW SYNC
Power range VVVF at 4 poles	2.2 > 11.0kW SYNC



Please note, left hand machine shown (as viewed from motor end).  
Right hand also available.

COMPLETE WEIGHT	GEARBOX ONLY	GEAR TOP	GEAR BASE	CROWN WHEEL	MOTOR & BEDPLATE	MOTOR & STATOR CREATE	ACCESSORIES BOX
240Kg	130Kg	NA	NA	NA	NA	60Kg	50Kg

Add additional 60Kg for slow shaft brake



0.50 > 1.60 M/S  
RATED SPEED



6-10 PERSON  
DUTY LOAD



A3  
COMPLIANT

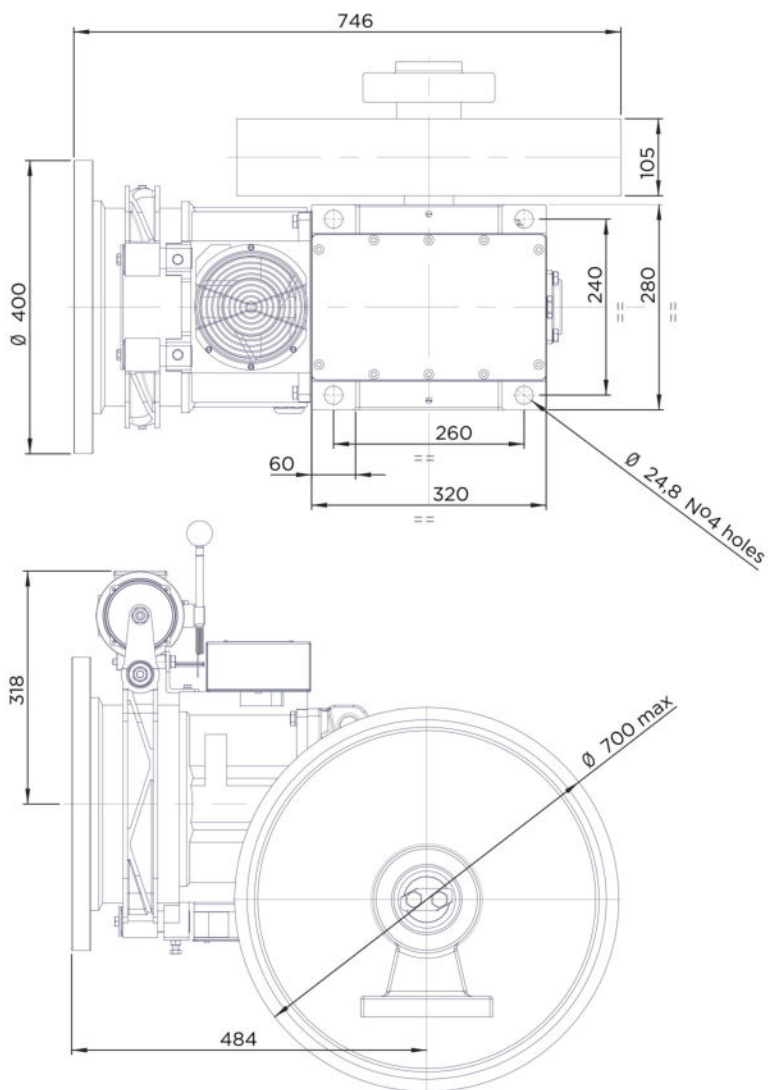


5 YEAR  
WARRANTY



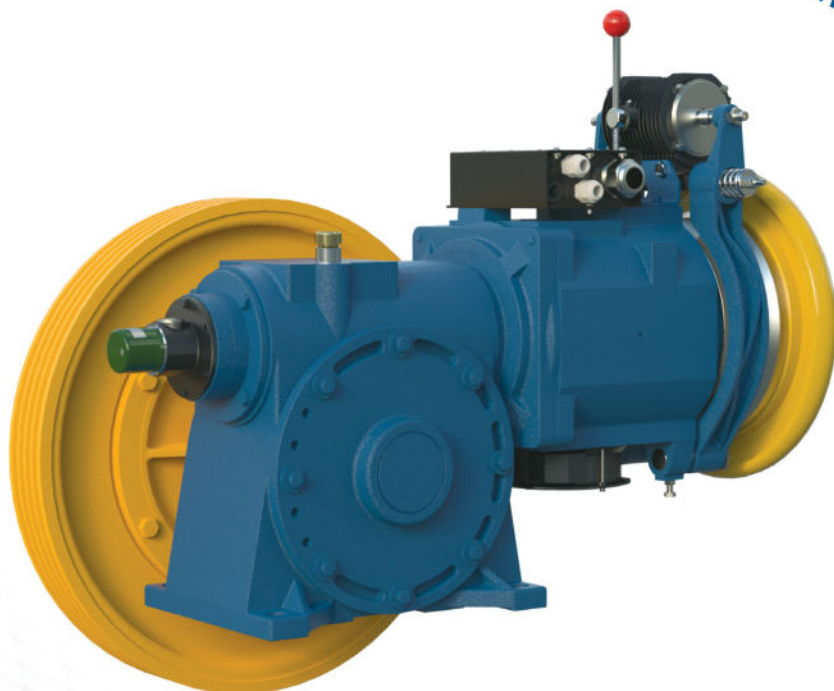
4 WEEK  
DELIVERY

DATA	
Max static load	3000Kg (3300Kg)
Ratios	1/71 > 1/55 > 1/45 > 2/57
Power range at 4/16 poles	3.5 > 5.5kW SYNC
Power range VVVF at 4 poles	3.3 > 7.3kW SYNC
Oil capacity	3.5ltr INCL



COMPLETE WEIGHT	GEARBOX ONLY	GEAR TOP	GEAR BASE	CROWN WHEEL	MOTOR & BEDPLATE	MOTOR & STATOR CREATE	ACCESSORIES BOX
240Kg	130Kg	NA	NA	NA	NA	60Kg	50Kg

Add additional 100Kg for slow shaft brake



0.50 > 1.60 M/S  
RATED SPEED



6-8 PERSON  
DUTY LOAD



A3  
COMPLIANT



5 YEAR  
WARRANTY

DATA	
Max static load	3100Kg
Ratios	1/60 > 1/47 > 2/71 > 3/56
Power range at 4/16 poles	3.5 > 7.3kW SYNC
Power range VVVF at 4 poles	3.3 > 11.4kW SYNC
Oil capacity	3.8ltr INCL





0.50 > 1.60 M/S  
RATED SPEED



6-10 PERSON  
DUTY LOAD



A3  
COMPLIANT

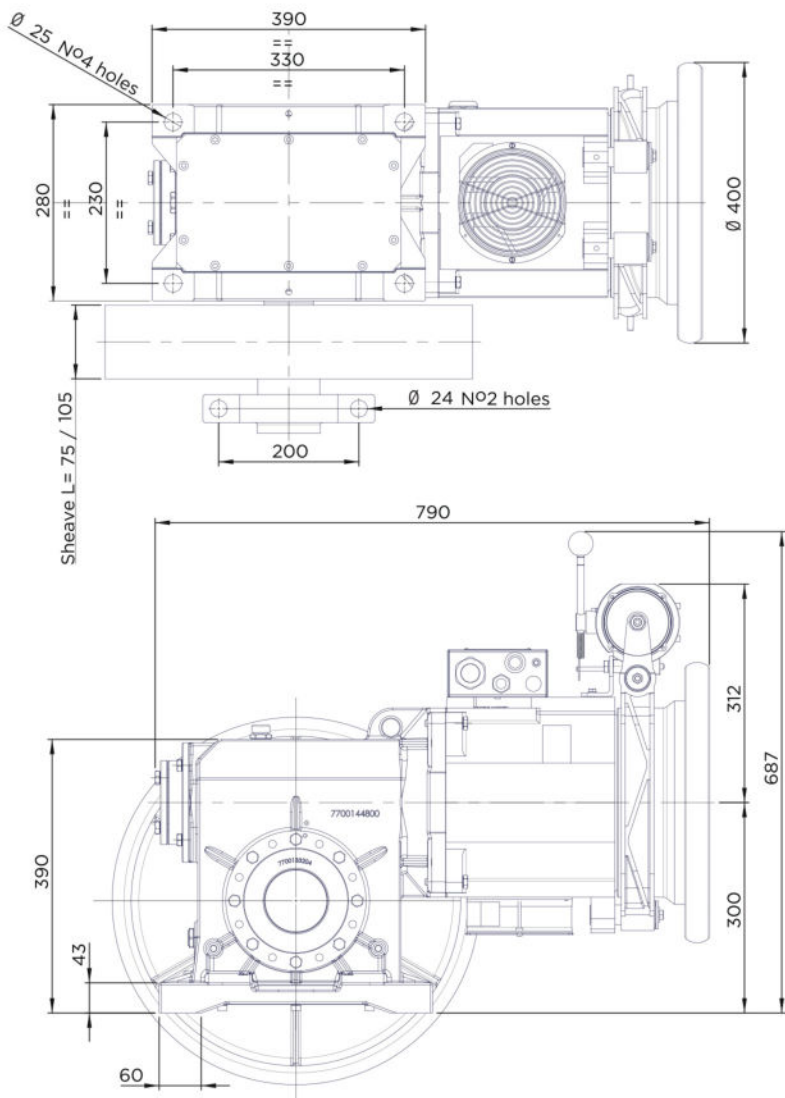


5 YEAR  
WARRANTY



4 WEEK  
DELIVERY

DATA	
Max static load	3100Kg (3400Kg)
Ratios	1/60 > 1/47 > 2/71 > 3/56
Power range at 4/16 poles	3.5 > 7.3kW SYNC
Power range VVVF at 4 poles	3.3 > 11.4kW SYNC
Oil capacity	3.6ltr INCL



COMPLETE WEIGHT	GEARBOX ONLY	GEAR TOP	GEAR BASE	CROWN WHEEL	MOTOR & BEDPLATE	MOTOR & STATOR CREATE	ACCESSORIES BOX
330Kg	190Kg	NA	NA	NA	NA	80Kg	60Kg

Add additional 60Kg for slow shaft brake



0.50 > 1.60 M/S  
RATED SPEED



6-10 PERSON  
DUTY LOAD



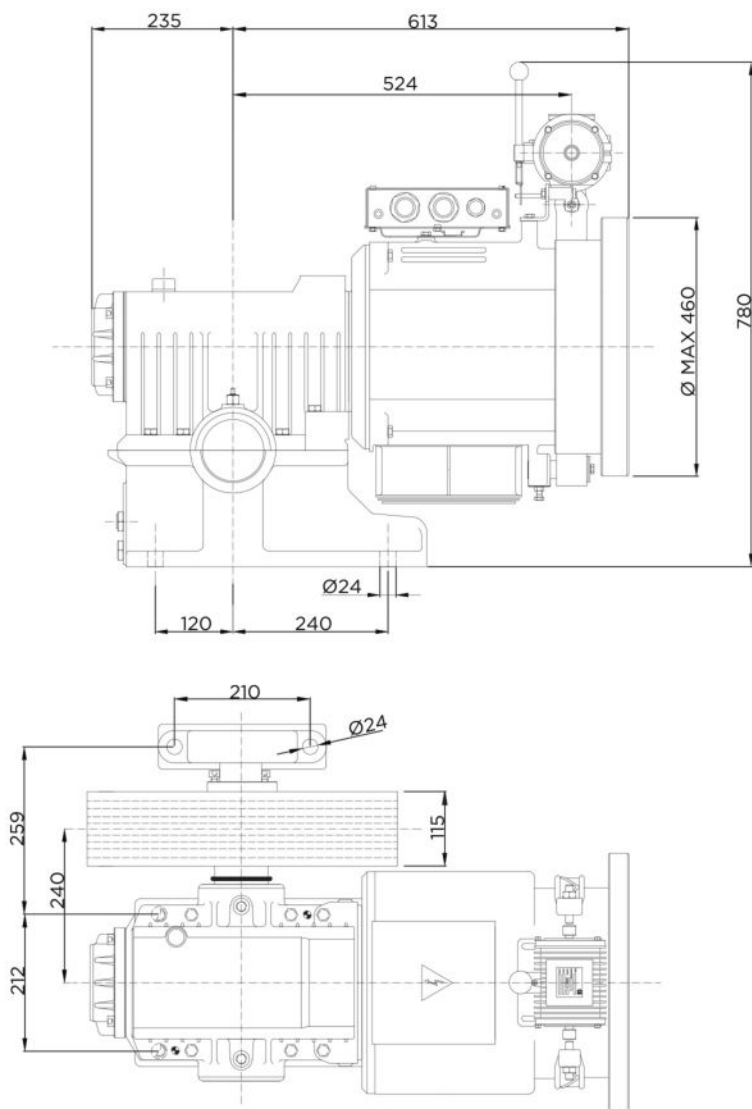
A BEARING  
AS STANDARD



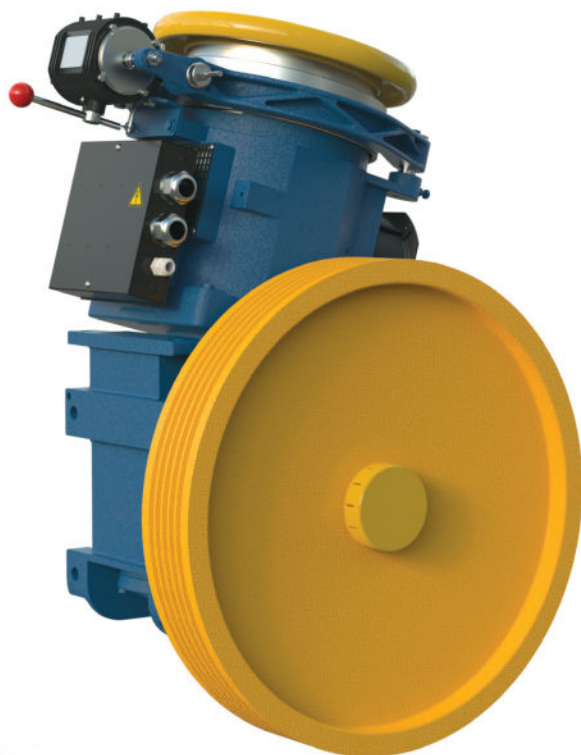
4 WEEK  
DELIVERY

#### DATA

Max static load	4000Kg
Ratios	1/61 > 1/49 > 1/39 > 2/53 > 3/47
Power range at 4/16 poles	13.5 > 11.0kW SYNC
Power range VVVF at 4 poles	3.3 > 19.1kW SYNC
Oil capacity	5.5ltr INCL



COMPLETE WEIGHT	GEARBOX ONLY	GEAR TOP	GEAR BASE	CROWN WHEEL	MOTOR & BEDPLATE	MOTOR & STATOR CREATE	ACCESSORIES BOX
350Kg	230Kg	90Kg	65Kg	75Kg	NA	60Kg	60Kg



0.50 > 1.60 M/S  
RATED SPEED



6-10 PERSON  
DUTY LOAD



A3  
COMPLIANT

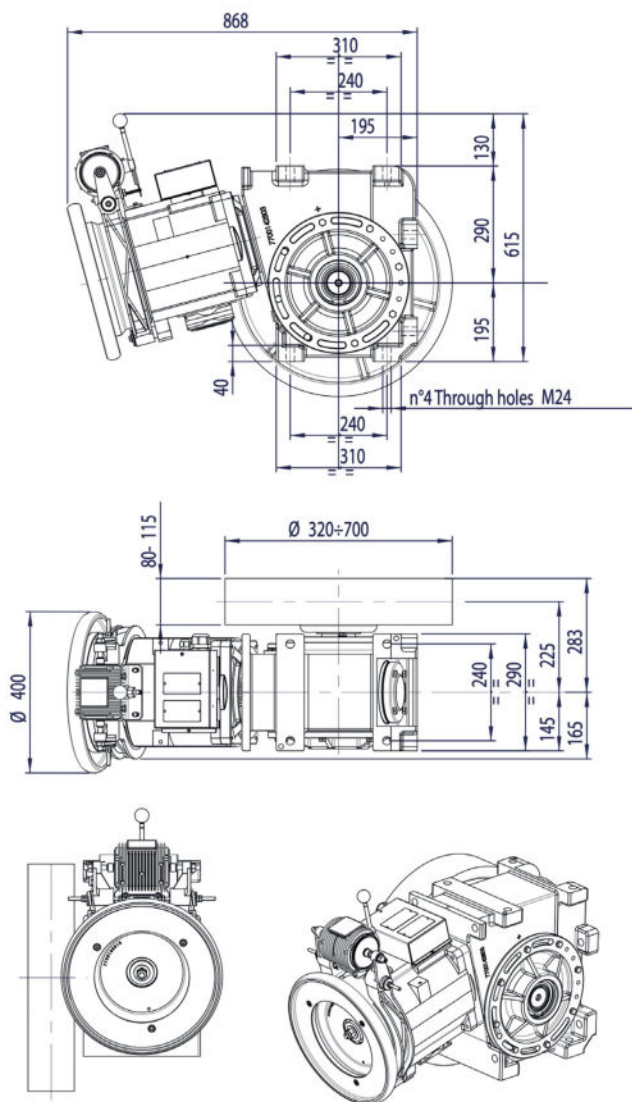


COMPACT  
DESIGN



LUBRICATED  
FOR LIFE

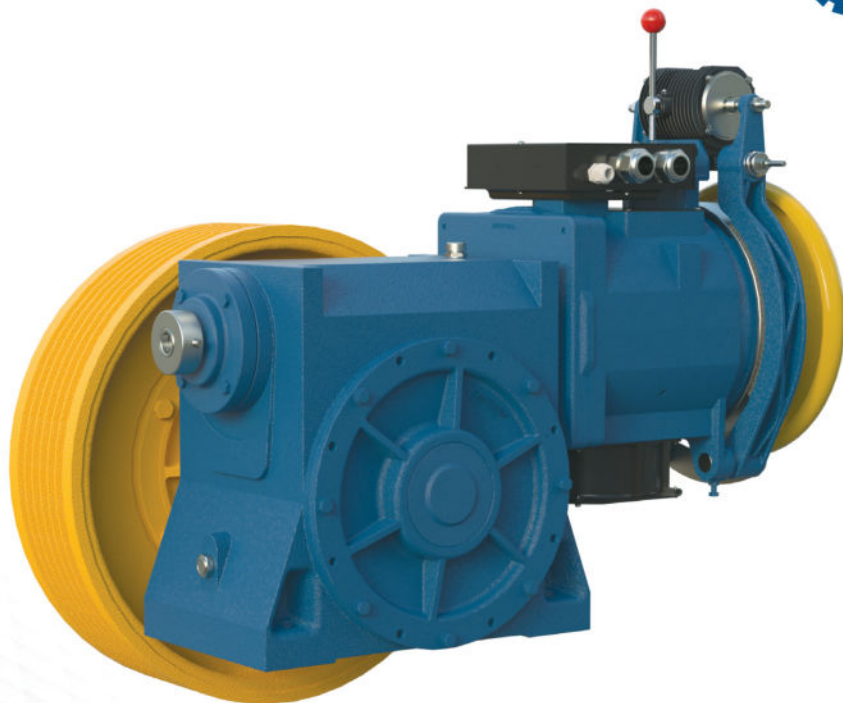
DATA	
Max static load	4200Kg
Ratios	1/61 > 1/49 > 1/39 > 2/53 > 3/47
Power range at 4/16 poles	3.5 > 11.0kW SYNC
Power range VVVF at 4 poles	3.3 > 20.6kW SYNC



Please note, left hand machine shown (as viewed from motor end).  
Right hand also available.

COMPLETE WEIGHT	GEARBOX ONLY	GEAR TOP	GEAR BASE	CROWN WHEEL	MOTOR & BEDPLATE	MOTOR & STATOR CREATE	ACCESSORIES BOX
370Kg	240Kg	NA	NA	NA	NA	60Kg	60Kg

Add additional 60Kg for slow shaft brake



0.50 > 1.60 M/S  
RATED SPEED



10-20 PERSON  
DUTY LOAD



A3  
COMPLIANT



5 YEAR  
WARRANTY



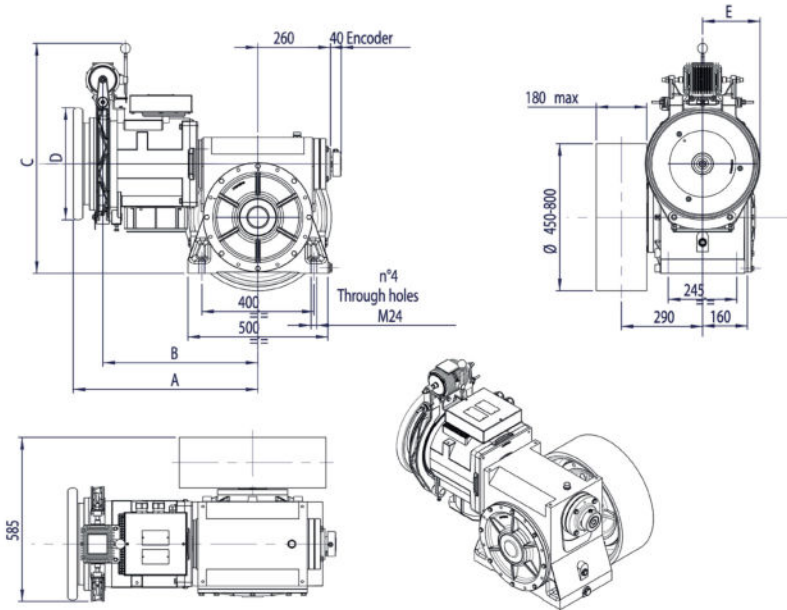
LUBRICATED  
FOR LIFE

**DATA**

Max static load	6000Kg
Ratios	1/65 > 1/48 > 1/39 > 2/53 > 2/39
Power range at 4/16 poles	6.0 > 20.6kW SYNC
Power range VVVF at 4 poles	5.9 > 25.0kW SYNC

## KEY TO DIMENSIONS

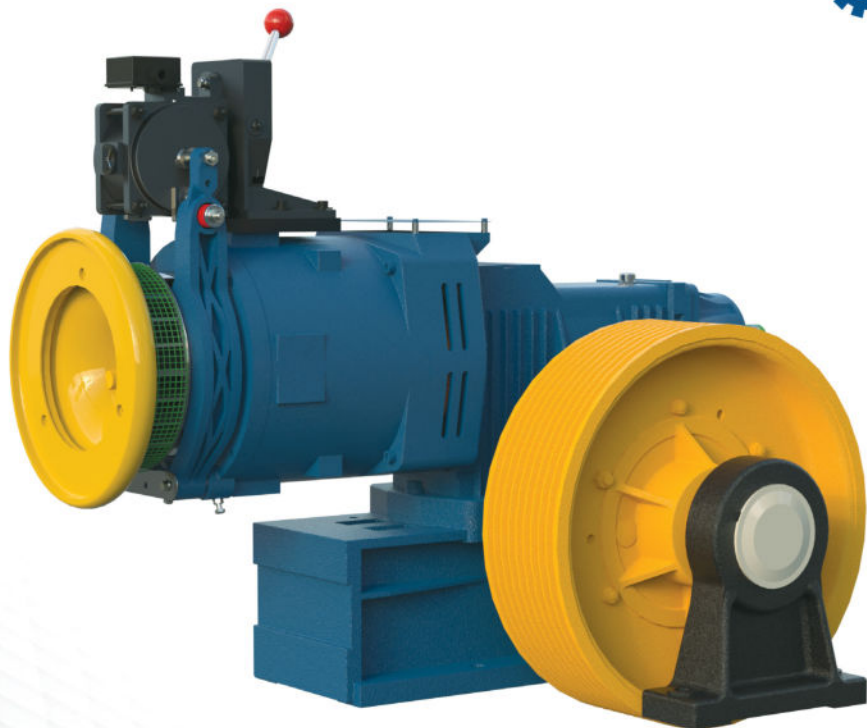
VVVF			4/16 POLES		
Motor Size	240	270	Motor Size	240	270
Kw/Cv Sync	5.9/13.2	13.6/20.6	Kw/Cv Sync	6/7.3	9.2/11
A	630	660	A	630	660
B	530	555	B	530	555
C	780	820	C	780	820
D	400	400	D	400	460
E	200	205	E	200	205



Please note, left hand machine shown (as viewed from motor end).  
Right hand also available.

COMPLETE WEIGHT	GEARBOX ONLY	GEAR TOP	GEAR BASE	CROWN WHEEL	MOTOR & BEDPLATE	MOTOR & STATOR CREATE	ACCESSORIES BOX
500Kg	300Kg	NA	NA	NA	NA	130Kg	70Kg

Add additional 60Kg (Warner 3000) or 130Kg (Warner 5800) for slow shaft brake



0.63 > 1.60 M/S  
RATED SPEED



12-24 PERSON  
DUTY LOAD



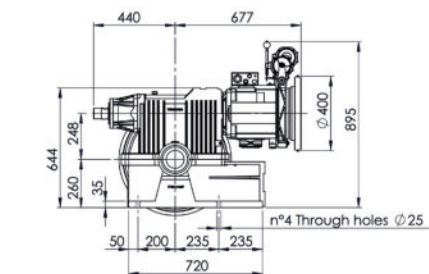
5 YEAR  
WARRANTY



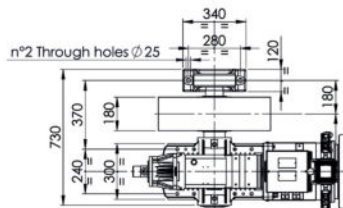
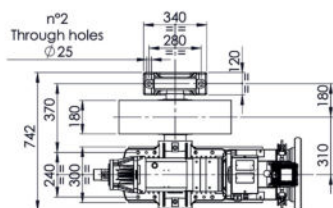
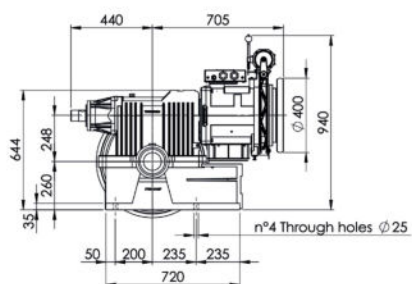
A BEARING  
AS STANDARD

DATA	
Max static load	8000Kg
Ratios	1/65 > 1/53 > 2/71 > 2/53 > 4/67
Power range at 4/16 poles	13.6 > 20.6kW SYNC
Power range VVVF at 4 poles	11.0 > 27.9kW SYNC
Oil capacity	9ltr INCL

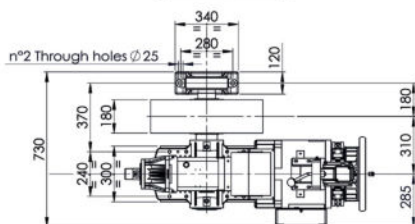
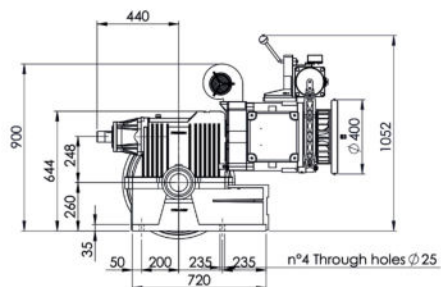
### 240 Frame Size



### 270 Frame Size



### 330 Frame Size



COMPLETE WEIGHT	GEARBOX ONLY	GEAR TOP	GEAR BASE	CROWN WHEEL	MOTOR & BEDPLATE	MOTOR & STATOR CREATE	ACCESSORIES BOX
700Kg	450Kg	140Kg	120Kg	190Kg	NA	160Kg	90Kg



0.63 > 1.60 M/S  
RATED SPEED



16+ PERSON  
DUTY LOAD



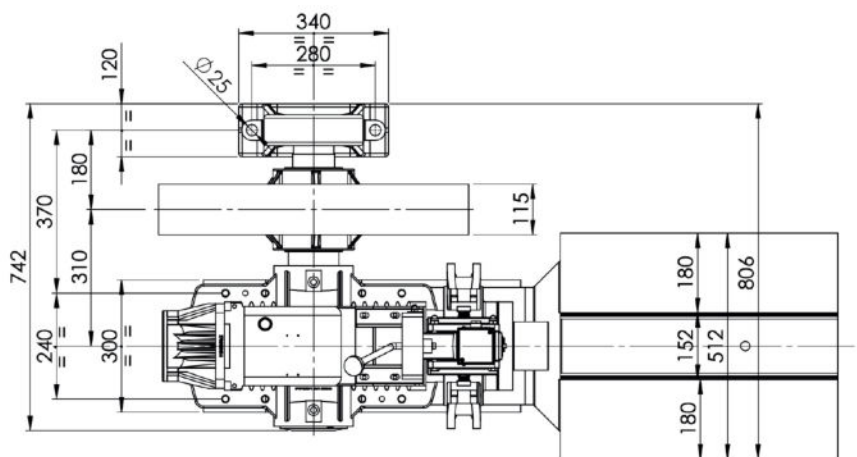
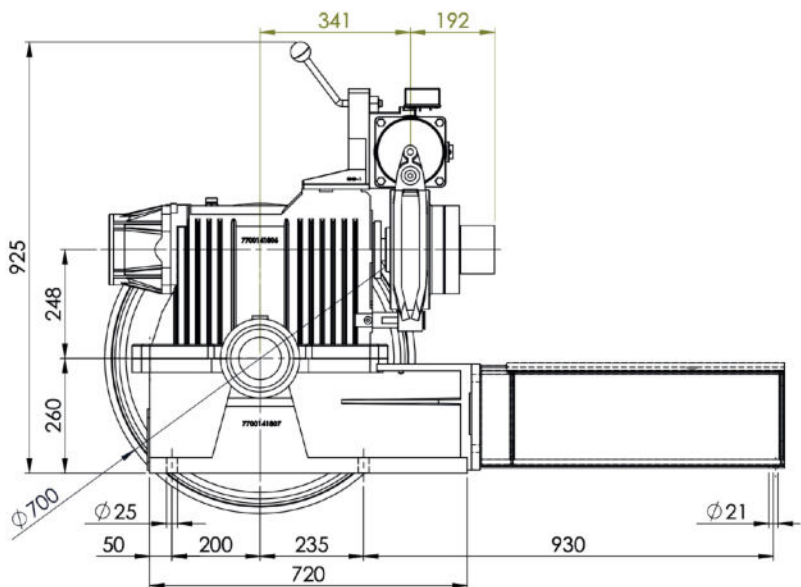
5 YEAR  
WARRANTY



A BEARING  
AS STANDARD

#### DATA

Max static load	8000Kg
Ratios	1/65 > 1/53 > 2/71 > 2/53 > 4/67
Power range at 4/16 poles	13.6 > 40.4kW SYNC
Power range VVVF at 4 poles	11.0 > 40.4kW SYNC
Oil capacity	9ltr INCL



COMPLETE WEIGHT	GEARBOX ONLY	GEAR TOP	GEAR BASE	CROWN WHEEL	MOTOR & BEDPLATE	MOTOR & STATOR CREATE	ACCESSORIES BOX
760Kg	450Kg	140Kg	120Kg	190Kg	220kg	NA	90Kg



0.63 > 1.60 M/S  
RATED SPEED

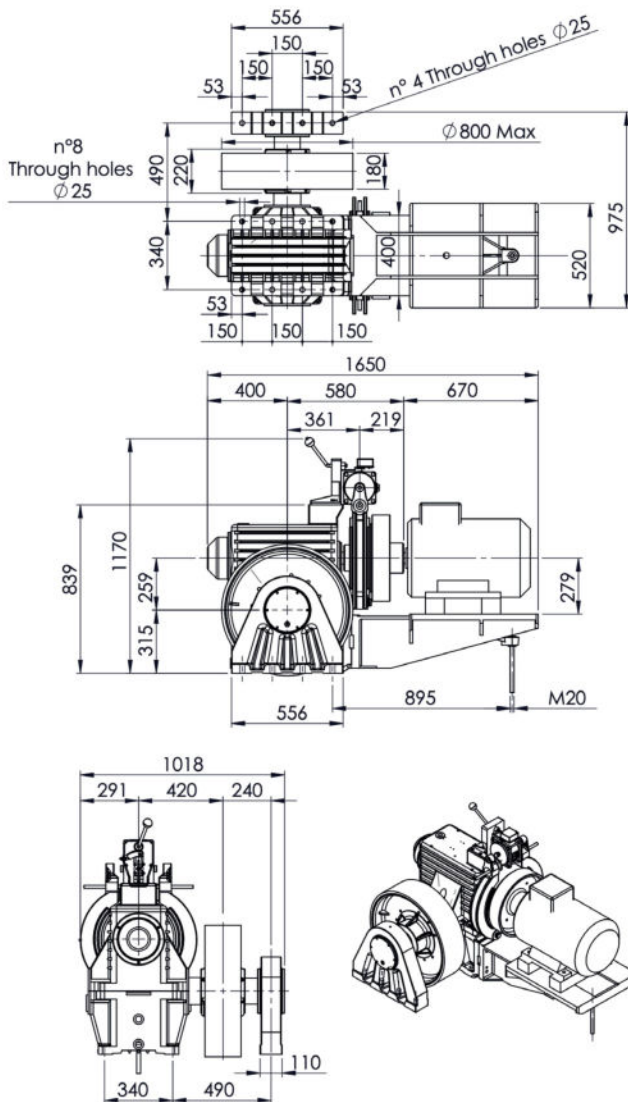


16+ PERSON  
DUTY LOAD



5 YEAR  
WARRANTY

DATA	
Max static load	12000Kg
Ratios	1/53 > 1/48 > 2/80 > 2/64 > 3/80 > 3/66 > 3/50
Power range at 4/16 poles	17.6 > 50.7kW SYNC
Power range VVVF at 4 poles	14.7 > 50.7kW SYNC
Oil capacity	20ltr INCL



Please note, left hand machine shown (as viewed from motor end).  
Right hand also available.

COMPLETE WEIGHT	GEARBOX ONLY	GEAR TOP	GEAR BASE	CROWN WHEEL	MOTOR & BEDPLATE	MOTOR & STATOR CREATE	ACCESSORIES BOX
1245Kg	785Kg	315Kg	150Kg	320Kg	340kg	NA	120Kg



0.63 > 1.60 M/S  
RATED SPEED



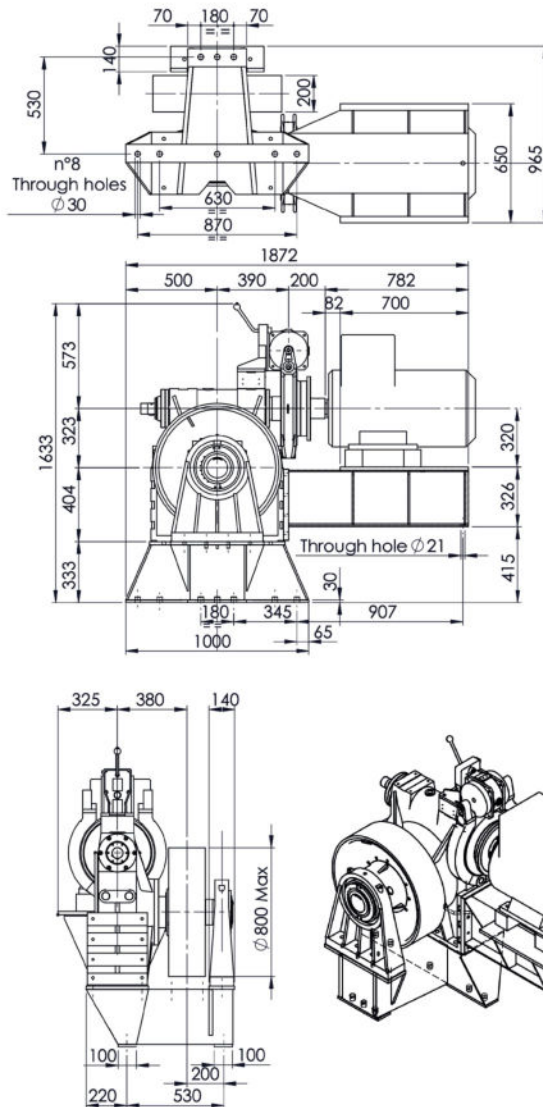
30-60 PERSON  
DUTY LOAD



5 YEAR  
WARRANTY

#### DATA

Max static load	15000Kg
Ratios	1/64 > 1/48 > 2/71 > 2/57 > 3/68 > 4/59
Power range at 4/16 poles	25.7 > 91.9kW SYNC
Power range VVVF at 4 poles	25.7 > 91.9kW SYNC
Oil capacity	18ltr INCL



Please note, left hand machine shown (as viewed from motor end).  
Right hand also available.

COMPLETE WEIGHT	GEARBOX ONLY	GEAR TOP	GEAR BASE	CROWN WHEEL	MOTOR & BEDPLATE	MOTOR & STATOR CREATE	ACCESSORIES BOX
2026Kg	1144Kg	NA	NA	NA	634kg	NA	248Kg



0.63  
RATED SPEED



10-12 PERSON  
DUTY LOAD

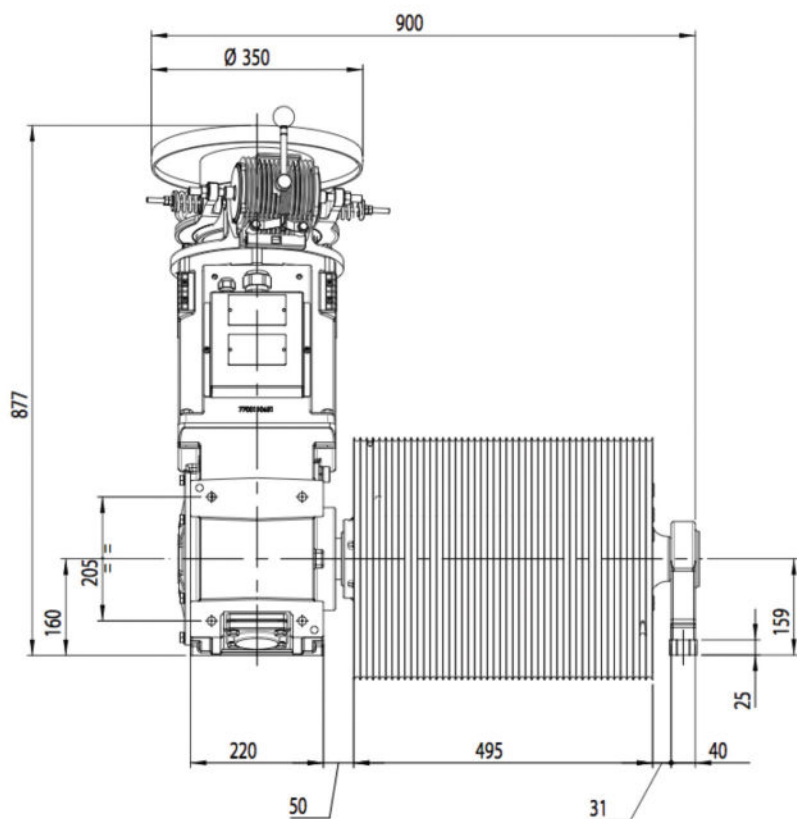
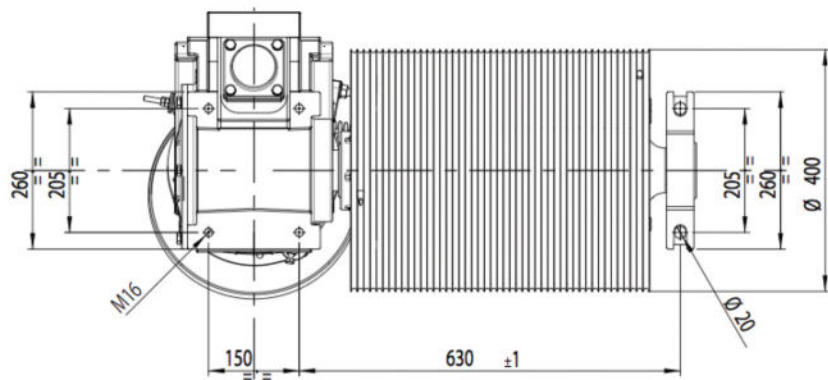


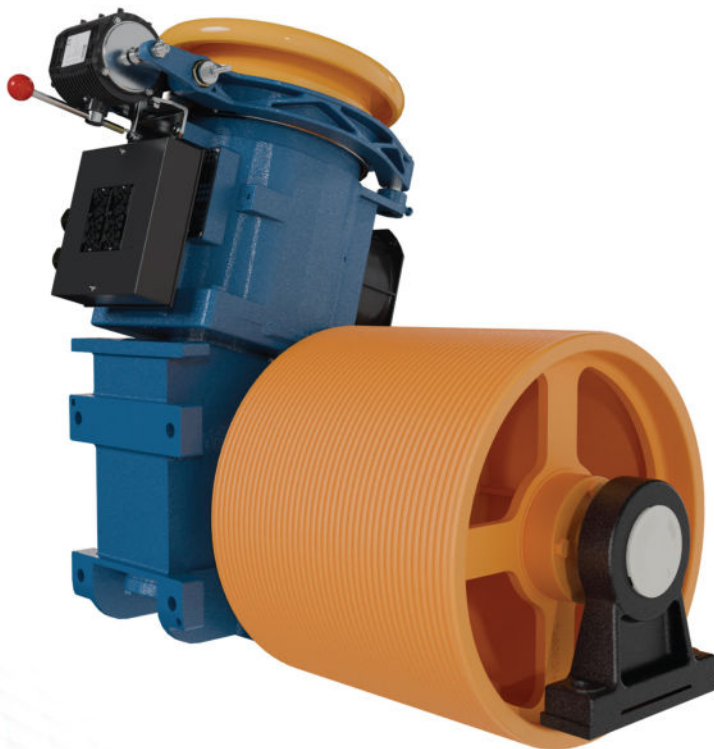
COMPACT  
DESIGN



LUBRICATED  
FOR LIFE

DATA	
Ratios	1/45
Power VVVF 4 poles	5.9kW
Max duty load	225Kg
Max cabin weight	275Kg
Travel range	30m





0.63  
RATED SPEED



10-12 PERSON  
DUTY LOAD

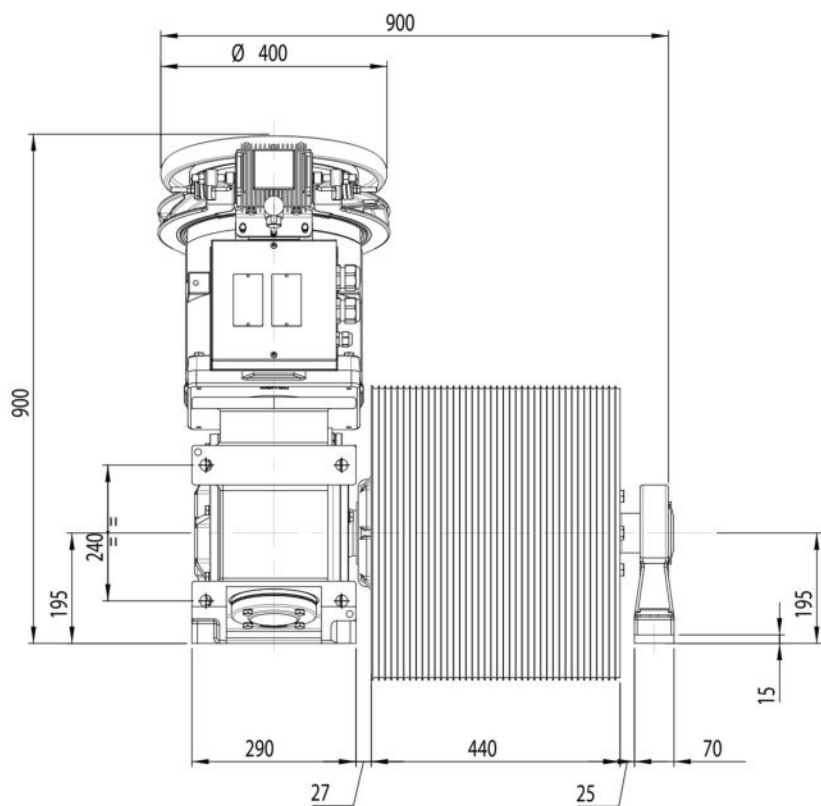
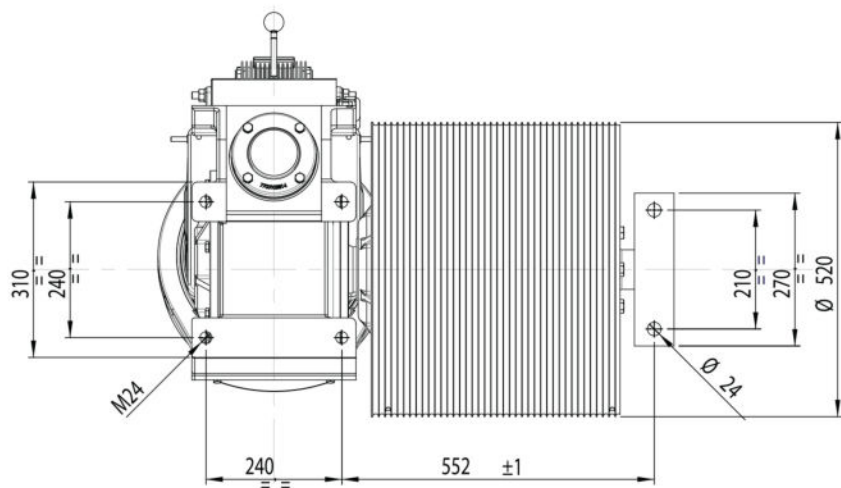


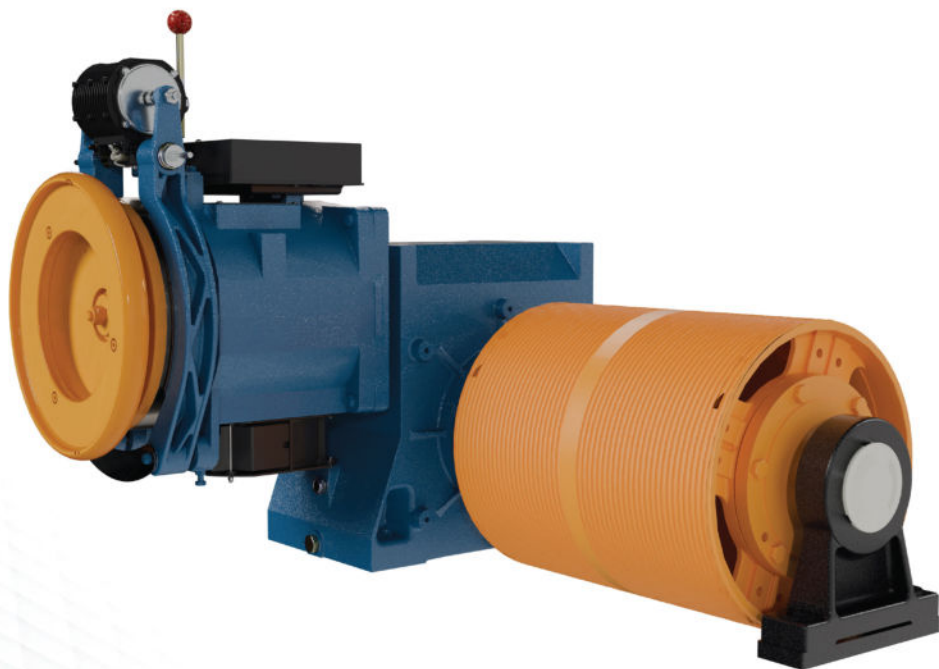
COMPACT  
DESIGN



LUBRICATED  
FOR LIFE

DATA	
Ratios	1/49
Power VVVF 4 poles	7.3 > 11.0kW
Max duty load	400Kg
Max cabin weight	650Kg
Travel range	30m





0.63  
RATED SPEED



10-12 PERSON  
DUTY LOAD



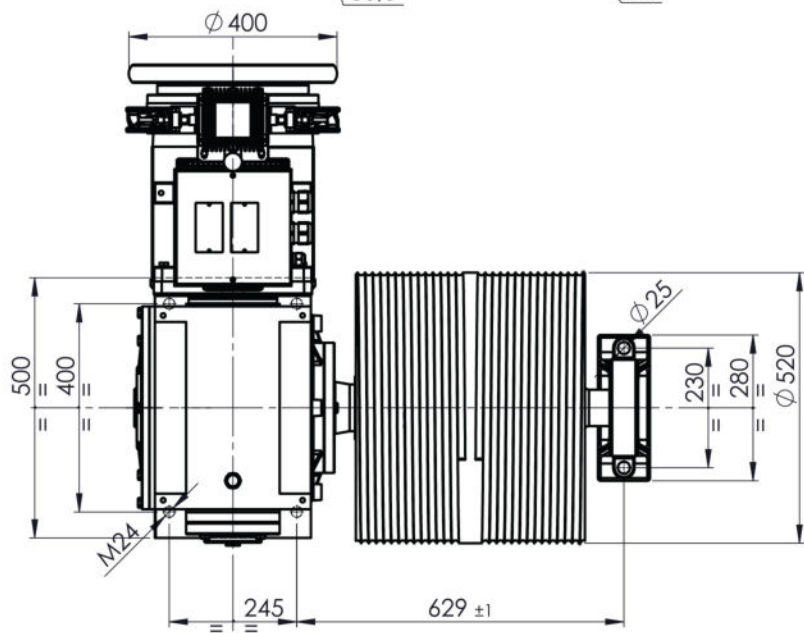
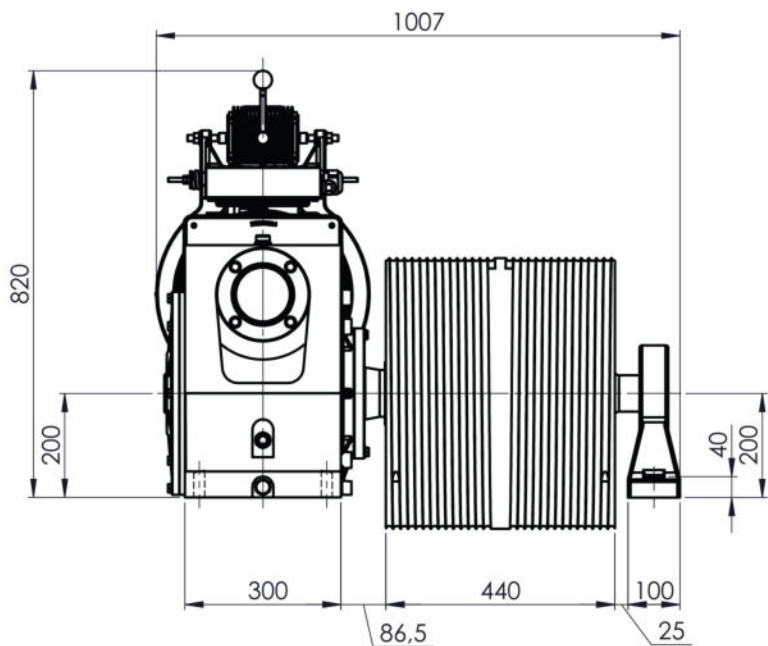
COMPACT  
DESIGN

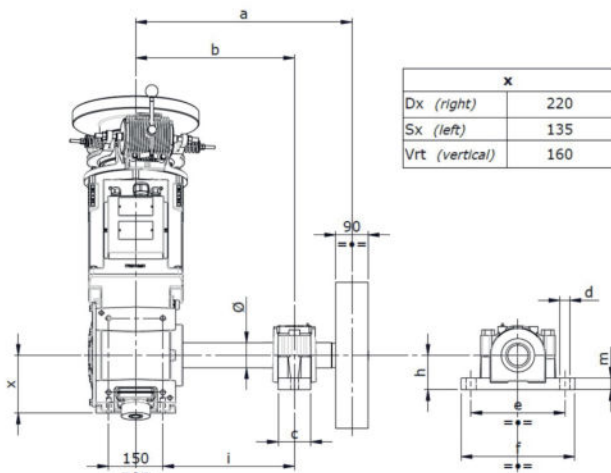


LUBRICATED  
FOR LIFE

#### DATA

Ratios	1/65
Power VVVF 4 poles	12.1kW
Max duty load	480Kg
Max cabin weight	680Kg
Travel range	22.5m





x	
Dx (right)	220
Sx (left)	135
Vrt (vertical)	160

x	
Dx (right)	220
Sx (left)	135
Vrt (vertical)	160

DIMENSIONS			
A:	600mm	D:	22mm
B:	460mm	E:	290mm
C:	100mm	F:	345mm

Maximum standard length of extended shaft, special build available on request.



0.50 > 3.50  
RATED SPEED



4-10 PERSON  
DUTY LOAD



COMPACT  
DESIGN



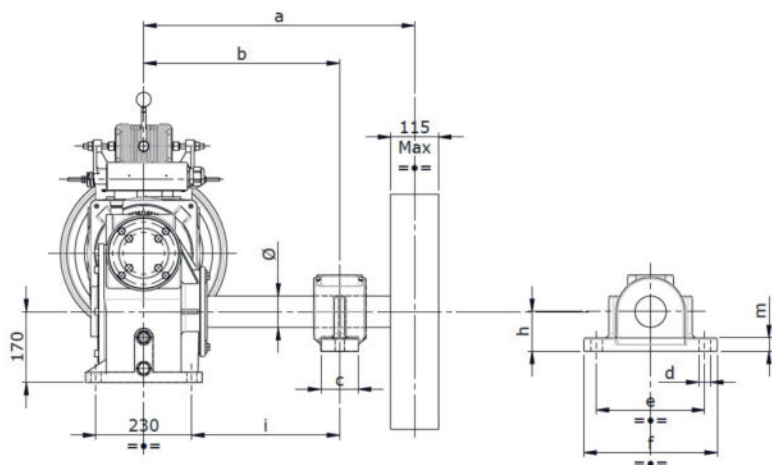
LUBRICATED  
FOR LIFE



A3  
COMPLIANT

DATA	
Max static load	3000Kg
Ratios	1/71 > 1/55 > 1/45 > 2/71 > 2/57 > 3/47
Power range at 4/16 poles	3.5 > 5.5kW SYNC
Power range VVVF at 4 poles	2.2 > 11.0kW SYNC

# GEARED WINDING UNITS | MF48 EXTENDED SHAFT



## DIMENSIONS

A:	650mm	D:	22mm
B:	510mm	E:	290mm
C:	100mm	F:	345mm

Maximum standard length of extended shaft, special build available on request.



0.50 > 1.60  
RATED SPEED



6-8 PERSON  
DUTY LOAD



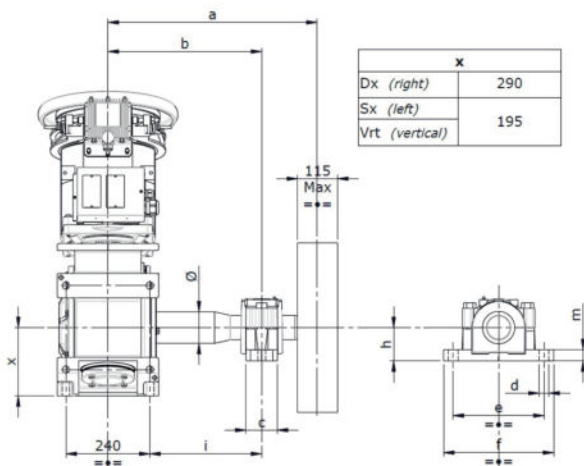
5 YEAR  
WARRANTY



A3  
COMPLIANT

## DATA

Max static load	3100Kg
Ratios	1/60 > 1/47 > 2/71 > 3/56
Power range at 4/16 poles	3.5 > 7.3kW SYNC
Power range VVVF at 4 poles	3.3 > 11.4kW SYNC
Oil capacity	3.8ltr INCL



x	
Dx (right)	290
Sx (left)	195
Vrt (vertical)	195

DIMENSIONS			
A:	725mm	D:	26mm
B:	585mm	E:	320mm
C:	110mm	F:	380mm

Maximum standard length of extended shaft, special build available on request.



0.50 > 1.60  
RATED SPEED



8-16 PERSON  
DUTY LOAD



COMPACT  
DESIGN



LUBRICATED  
FOR LIFE



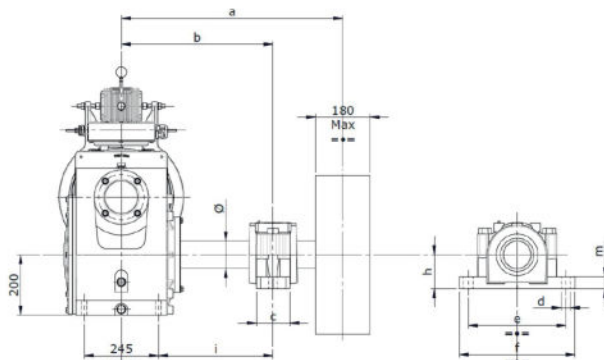
A3  
COMPLIANT

DATA	
Max static load	4200Kg
Ratios	1/61 > 1/49 > 1/39 > 2/53 > 3/47
Power range at 4/16 poles	3.5 > 11.0kW SYNC
Power range VVVF at 4 poles	3.3 > 20.6kW SYNC

# GEARED WINDING UNITS | MF84 / MF94 EXTENDED SHAFT



MF84



MF94

	MF84 DIMS	MF94 DIMS
A:	730mm	800mm
B:	530mm	595mm
C:	120mm	150mm
D:	26mm	35mm
E:	350mm	420mm
F:	410mm	500mm

Maximum standard length of extended shaft, special build available on request.



0.50 > 1.60  
RATED SPEED



10-20 PERSON  
DUTY LOAD



5 YEAR  
WARRANTY



A3  
COMPLIANT



LUBRICATED  
FOR LIFE

DATA	
Max static load	6000Kg
Ratios	1/65 > 1/48 > 1/39 > 2/53 > 2/39
Power range at 4/16 poles	6.0 > 20.6kW SYNC
Power range VVVF at 4 poles	5.9 > 25.0kW SYNC



As with our gearless range, SLS offer a complete gear calculation service to help you choose the correct gear and motor combination to suit your application.

Our calculations provide all the technical information needed to ensure the machine supplied is 'fit for purpose', giving you complete confidence that you have made the right choice.

Full technical and engineering support is provided across the entire range of Sassi geared machines. Motors are available for the following control systems:

### ENCODERS

Plug in lead for ease of installation.  
Encoder 1024 ppr 5 > 30v



### A BEARING

External Support



AC2

2-SPEED  
MOTOR

VVVF

VARIABLE FREQUENCY  
REGULATED - OPEN  
AND CLOSED LOOP

The machines are available with either a Sassi manufactured A4 flange mounted motor or on the MB range we can fit a B3 foot-mounted motor.

## GEARED ACCESSORIES

	MODY	LEO	MF48	TORO	MF84	MF94	MB94	MB95	MB108
Rope guard / Rope clamp	+	+	+	+	+	+	+	+	+
Encoder coupling	+	+	+	+	+	+	+	+	+
Encoder	+	+	+	+	+	+	+	+	+
Sheave protection	+	+	+	+	+	+	+	+	+
IP Protection	+	+	+	+	+	×	×	×	×
Drum	×	+	+	+	+	+	+	+	×
A3 emergency brake	+	+	+	+	+	×	×	×	×
Prepared for brake on slow shaft	+	+	+	+	+	×	×	×	×
Brake on slow shaft	+	+	+	+	+	×	×	×	×
Outboard A bearing	+	+	+	+	+	✓	✓	✓	✓
Prepared for hand release / remote cable for main brake	+	+	+	+	+	×	×	×	×
Brake switches	+	+	+	+	+	+	+	+	+
Inverter	+	+	+	+	+	+	+	+	+
Emergency manoeuvre manual	+	+	×	×	×	×	×	×	×
Motor tropicalization	+	+	+	+	+	+	+	+	+
IP54 motor protection	×	×	×	×	×	×	+	+	+
Flat frame	+	+	+	+	+	+	+	+	+
High frame with divertors	+	+	+	+	+	+	+	+	+
Isolation	+	+	+	+	+	+	+	+	×
Mineral oil	×	×	+	×	×	+	+	+	+
Synthetic oil	✓	✓	✓	✓	✓	✓	✓	✓	✓

 Standard
  On request
  Not available

## MACHINE OPERATION CYCLE

We base our calculations on a working cycle of 8 HOURS PER DAY. With the following load examples the life expectancy of each ratio on each type of machine, with maximum acceptable power applied, is **30,000 hours**. Theoretically a Gearless machine can achieve a lifetime of **60,000 hours** depending on application.



GEARED - 30,000 HRS



GEARLESS - 60,000 HRS

## LOADS TESTED

100% LOAD



FOR 4HRS



10% LOAD



FOR 3HRS



50% LOAD



FOR 2HRS





## KEY INFORMATION



Rated starts per hour:  
(AC2 - geared 180sts/h)  
(vvvf - 180/240st/h)



20 years minimum life of components based on rated starts / operations



20 years minimum design life.



Does not require forced ventilation as standard (depending on site conditions)



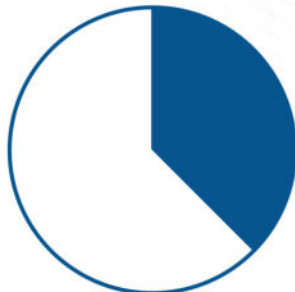
Component with shortest life span (bearings) is available as a spare part - Ex stock

## TESTED STARTS

180 STARTS



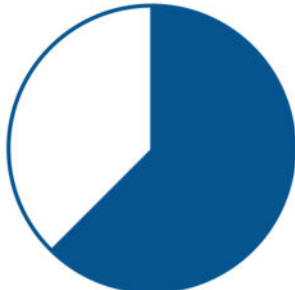
FOR 3HRS



240 STARTS

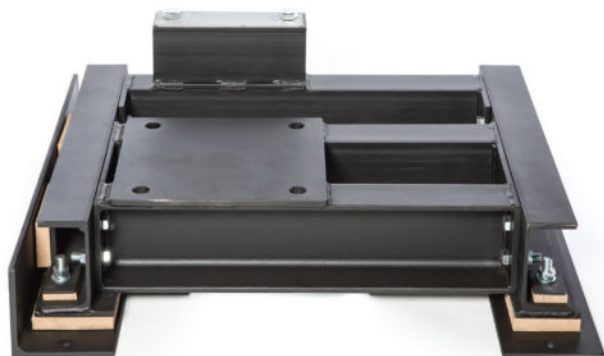


FOR 5HRS





## SLS FLAT RAFT



WELDED AS  
STANDARD



BOLTED  
AVAILABLE



SHIMS  
INCLUDED



TICO ISOLATION  
INCLUDED

## SLS UPSTAND



TOP SECTION  
WELDED AS  
STANDARD



BOLTED  
CONSTRUCTION  
AVAILABLE



LEGS  
SUPPLIED  
BOLTED

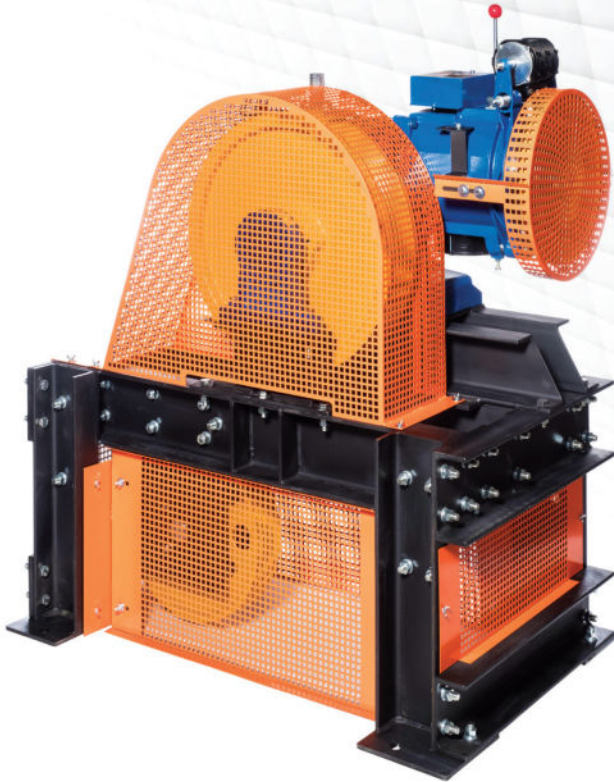


ADJUSTABLE  
PULLEY MOUNTS  
AS STANDARD



TICO  
ISOLATION  
INCLUDED

## SLS UPSTAND WITH OPTIONAL GUARDING



BESPOKE  
TO SUIT SITE  
CONDITIONS



QUICK  
RELEASE  
FIXINGS



POWDER  
COATED  
FINISH

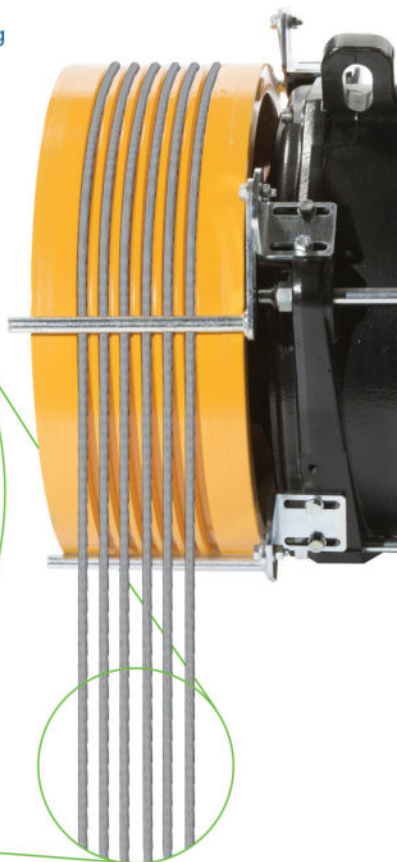
SLS Provide ISO9001 Design approved CAD drawings for any machine steelwork we supply. Where necessary SLS will carry out machine room site surveys to support and assist you in selecting the best solution for the application. We ensure every machine supplied is fully compliant with all the necessary standards including the relevant Traction calculations for your installation.



# Optimum efficiency with



All of our winding machine packages are calculated using Gustav Wolf Rope data, providing our customers with optimal safety, reliability and stability.





**WOLF PAWO F7S**  
STEEL CORE

---



OPTIMUM GEARED/  
GEARLESS MACHINE  
SELECTION



CORRECT ROPE  
WEIGHT USED IN  
CALCULATIONS



CORRECT SELECTION  
OF ROPE TO SUIT SHEAVE  
BRINELL HARDNESS



CORRECTLY MATCHED  
ROPE AND  
SHEAVE PROFILE



EXTENDED ROPE AND  
SHEAVE LIFE DUE TO  
CORRECT MATCH

## Your typical **SLS** Modernisation Package includes:



GEARED



GEARLESS

RAFT

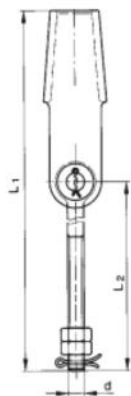
GUARDING

DIVERTOR

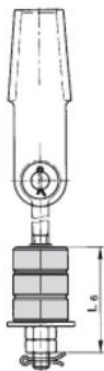
WIRE ROPES

DATA				
Rope Dia.	Eyebolt	Size	Calculated Mass (kg/m)	min. breaking point (kN)
6 - 8mm	450mm	M12	0.280	44.6
9 - 11mm	450mm	M16	0.356 - 0.523	56.0 - 83.1
12 - 14mm	450mm	M20	0.619 - 0.857	98.9 - 134.8
15 -17mm	450mm	M24	0.959 - 1.100	152.8 - 176.1

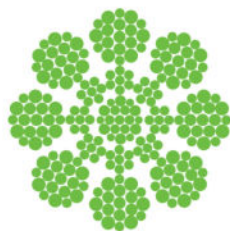
Additional sizes available on request.



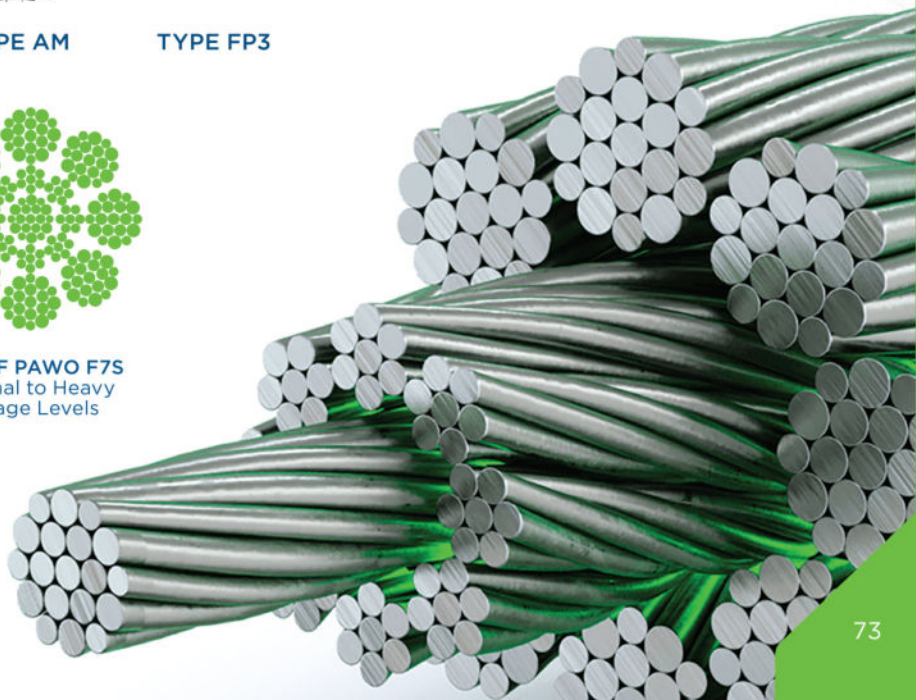
TYPE AM

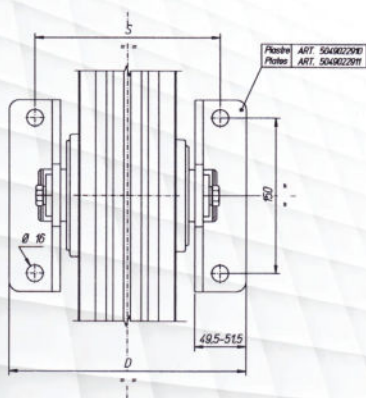
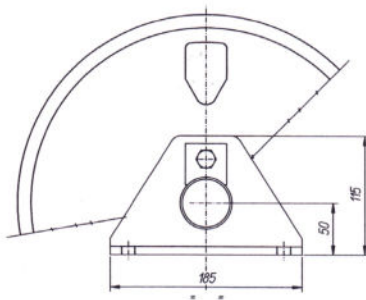
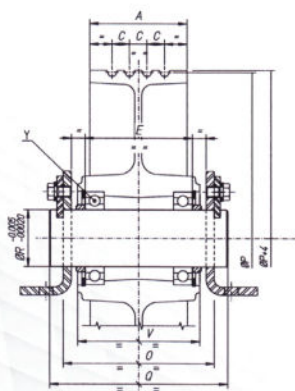


TYPE FP3



**WOLF PAWO F75**  
Normal to Heavy  
Usage Levels





HIGH-LOAD CAPACITY  
BALL BEARINGS



SHAFT AND  
KEEPER PLATES



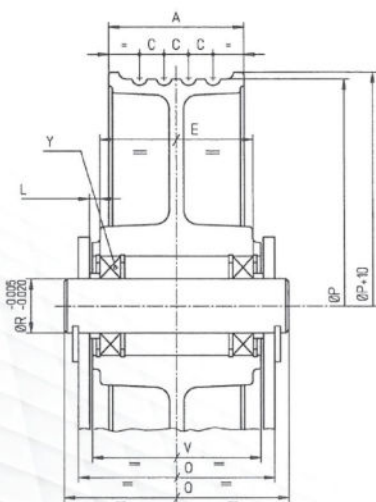
SHAFT AND  
SUPPORT ANGLES



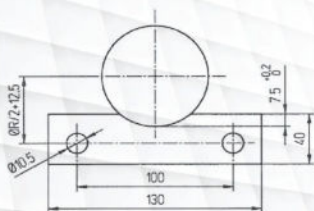
ADDITIONAL SIZES  
AVAILABLE

## DATA

ARTICLE	P	S	D	O	GROOVES	ØROPE	A	C	E	V	R	Q	Y	MAX. LOAD	
T080150000	320	180	230	146	3	8	94	17	104	118	55	170	6211	2200 daN (KG)	
T080151000					4									2800 daN (KG)	
T080152000					5										
T080153000					6										
T080154000	360	180	230	146	3	9	94	17	104	118	55	170	6211	2630 daN (KG)	
T080155000					4									3230 daN (KG)	
T080156000					5										
T080157000					6										
T080158000	400	180	230	146	3	10	94	17	104	118	55	170	6211	3150 daN (KG)	
T080159000					4									3750 daN (KG)	
T080160000					5										
T080161000					6										
T080162000	450	180	230	146	3	11	94	17	104	118	55	170	6211	3930 daN (KG)	
T080163000					4									4730 daN (KG)	
T080164000					5										
T080165000					6										
T080166011	12	500	180	230	146	11-12	94	17	104	118	55	170	6211	3950 daN (KG)	
T080167011														4	4750 daN (KG)
T080168011														5	
T080169011														6	
T080170000	500	180	230	146	3	12	94	20	104	118	55	170	6211	5100 daN (KG)	
T080171000					4									6200 daN (KG)	
T080172000					5										
T080173000					6										
T080730000	520	180	230	146	3	11	94	17	104	118	55	170	6211	3950 daN (KG)	
T080731000					4									4750 daN (KG)	
T080732000					5										
T080733000					6										
T080734012	13	520	180	230	146	12-13	94	20	104	118	55	170	6211	5100 daN (KG)	
T080735012														4	6200 daN (KG)
T080736012														5	
T080737012														6	
T080174000	550	180	230	146	3	11	94	17	104	118	55	170	6211	3950 daN (KG)	
T080175000					4									4750 daN (KG)	
T080176000					5										
T080177000					6										
T080178012	13	550	180	230	146	12-13	94	20	104	118	55	170	6211	5230 daN (KG)	
T080179012														4	6330 daN (KG)
T080180012														5	
T080181012														6	
T080182000	600	180	230	146	3	11	94	17	104	118	55	170	6211	3950 daN (KG)	
T080183000					4									4750 daN (KG)	
T080184000					5										
T080185000					6										
T080186012	13	600	180	230	146	12-13	94	20	104	118	55	170	6211	5230 daN (KG)	
T080187012														4	6330 daN (KG)
T080188012														5	
T080189012														6	
T080190000	650	180	230	146	3	11	94	17	104	118	55	170	6211	3950 daN (KG)	
T080191000					4									4750 daN (KG)	
T080192000					5										
T080193000					6										
T080194012	13	650	180	230	146	12-13	111	20	104	118	55	170	6211	5230 daN (KG)	
T080195012														4	6330 daN (KG)
T080196012														5	
T080197012														6	
T080198000	700	180	230	146	3	11	94	17	104	118	55	170	6211	3950 daN (KG)	
T080199000					4									4750 daN (KG)	
T080200000					5										
T080201000					6										
T080202012	13	700	180	230	146	12-13	94	20	104	118	55	170	6211	5230 daN (KG)	
T080203012														4	6330 daN (KG)
T080204012														5	
T080205012														6	
T080206000	750	180	230	146	3	11	111	17	104	118	55	170	6211	3950 daN (KG)	
T080207000					4									4750 daN (KG)	
T080208000					5										
T080209000					6										
T080210012	13	750	180	230	146	12-13	111	20	104	118	55	170	6211	5230 daN (KG)	
T080211012														4	6330 daN (KG)
T080212012														5	
T080213012														6	
T080214000	800	180	230	146	3	11	111	17	104	118	55	170	6211	3950 daN (KG)	
T080215000					4									4750 daN (KG)	
T080216000					5										
T080217000					6										
T080218012	13	800	180	230	146	12-13	111	20	104	118	55	170	6211	5230 daN (KG)	
T080219012														4	6330 daN (KG)
T080220012														5	
T080221012														6	



R = 55 L = 8.5  
R = 60 L = 9.5



HIGH-LOAD CAPACITY  
BALL BEARINGS



SHAFT AND  
SUPPORT ANGLES



SHAFT AND  
KEEPER PLATES

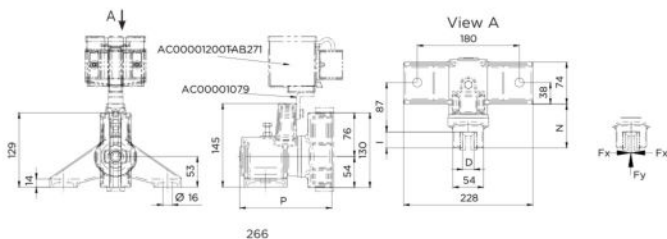


ADDITIONAL SIZES  
AVAILABLE

DATA											
P	O	GROOVES	ØROPE	A	C	E	V	R	Q	Y	MAX. LOAD
320	146	3 4 5 6	8	94	17	104	118	55	170	6011	2200 daN (KG)
				111							2800 daN (KG)
360	146	3 4 5 6	9	94	17	104	118	55	170	6011	2630 daN (KG)
				111							3230 daN (KG)
400	146	3 4 5 6	10	94	17	104	118	55	170	6211	3150 daN (KG)
				111							3750 daN (KG)
450	146	3 4 5 6	11	94	17	104	118	55	170	6211	3930 daN (KG)
				111							4730 daN (KG)
500	146	3 4 5 6	11-12	94	17	104	118	55	170	6211	3950 daN (KG)
				111							4750 daN (KG)
500	146	3 4 5 6	12	94	20	104	118	55	170	6211	5100 daN (KG)
	166			111							122
520	146	3 4 5 6	11	94	17	104	118	55	170	6211	3950 daN (KG)
				111							4750 daN (KG)
520	146	3 4 5 6	12-13	94	20	104	118	55	170	6211	5100 daN (KG)
	166			111							122
550	146	3 4 5 6	11	94	17	104	118	55	170	6211	3950 daN (KG)
				111							4750 daN (KG)
550	146	3 4 5 6	12-13	94	20	104	118	55	170	6211	5230 daN (KG)
	166			111							122
600	146	3 4 5 6	11	94	17	104	118	55	170	6211	3950 daN (KG)
				111							4750 daN (KG)
600	146	3 4 5 6	12-13	94	20	104	118	55	170	6211	5230 daN (KG)
	166			111							122
650	146	3 4 5 6	11	94	17	104	118	55	170	6211	3950 daN (KG)
				111							4750 daN (KG)
650	146	3 4 5 6	12-13	94	20	104	118	55	170	6211	5230 daN (KG)
	166			111							122
700	146	3 4 5 6	11	94	17	104	118	55	170	6211	3950 daN (KG)
				111							4750 daN (KG)
700	146	3 4 5 6	12-13	94	20	104	118	55	170	6211	5230 daN (KG)
	166			111							122
750	146	3 4 5 6	11	94	17	104	118	55	170	6211	3950 daN (KG)
				111							4750 daN (KG)
750	146	3 4 5 6	12-13	94	20	104	118	55	170	6211	5230 daN (KG)
	166			111							122
800	146	3 4 5 6	11	94	17	104	118	55	170	6211	3950 daN (KG)
				111							4750 daN (KG)
800	146	3 4 5 6	12-13	94	20	104	118	55	170	6211	5230 daN (KG)
	166			111							122

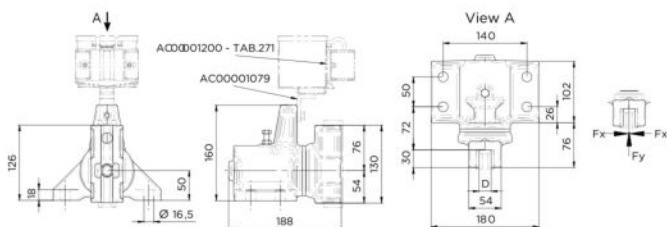


### TAB 220



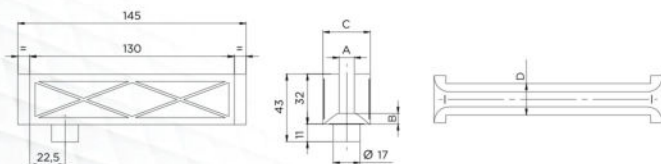
DATA	P	D	I	N	FX MAX	FY MAX
	MM	MM	MM	MM	N	N
TAB 220	160	24	28	78	2080	4800

### TAB 230



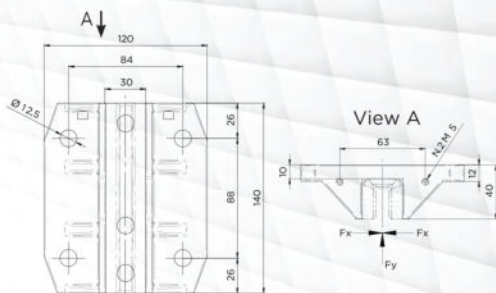
DATA	D	FX MAX	FY MAX
	MM	N	N
TAB 230	24	8820	17500

### TAB 250



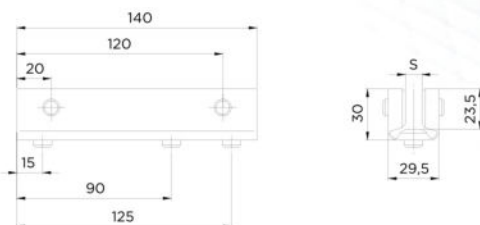
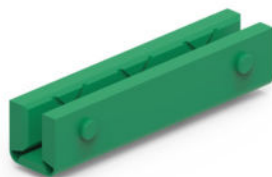
DATA	A	B	C	D
	MM	MM	MM	MM
TAB 250	16.5	5	32	24

## TAB 255



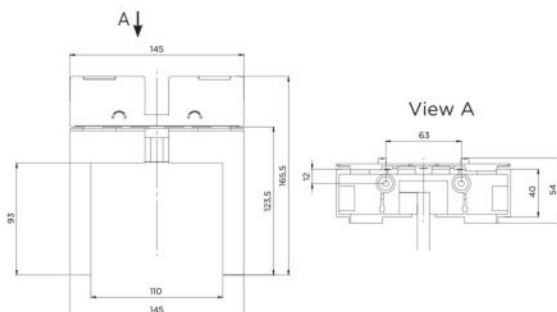
DATA	PO	FX MAX	FY MAX
	MM	N	N
TAB 255	5-6-7-8-9-10-11-12-14-15-16	10800	8600

## TAB 260



DATA	GUIDERAILS	S
	MM	MM
TAB 260	16	16.5

## TAB 270





COST  
EFFECTIVE



COMPACT  
DESIGN



PRE WIRED  
PLUG & PLAY



BATTERY  
CHARGER

#### DIMENSIONS

WIDTH	HEIGHT	DEPTH	WEIGHT
366mm	357mm	210mm	18Kg

RED-E commences operation within a few seconds of mains power failure.

When the car is stuck in-between floors, RED-E powers the machine in the most favourable direction (according to the car position), brings the car to floor level and operates the car doors.

Becomes operational as soon as all safety contacts are closed. An optional board is available that powers the car lights.

AVAILABLE IN 3 SIZES:

Up to 35A for AC1 or AC2 and VVVF motors.



SUITABLE FOR  
ALL LIFT  
APPLICATIONS



BATTERY  
CHARGER\*  
INCLUDED



CONTROLS  
BRAKE OPENING  
AND CLOSING



FORCED  
RUN  
OPTION

**DIMENSIONS**

WIDTH	HEIGHT	DEPTH	WEIGHT
386mm	570mm	250mm	23Kg

In the event of a mains power failure the RED-R automatically turns the car lights on and brings the car to the nearest floor. The RED-R moves the machine in the most favourable direction (according to the car position), brings the car to floor level and operates the car doors. All rescue operations are performed only when the safety chain contacts (controlled by RED-R) are closed.

Suitable for new and existing lifts with A/C, D/C or gearless motors up to 150A.  
\*Battery charger enables voltage/current adjustment.



SUITABLE  
FOR GEARLESS  
MACHINES



FORCED  
RUN  
OPTION



SUPPLIES  
POWER TO THE  
CONTROLLER (UPS)



BATTERY  
CHARGER  
INCLUDED

#### DIMENSIONS

WIDTH	HEIGHT	DEPTH	WEIGHT
484mm	527mm	180mm	30Kg

In the event of a mains power failure the RED-G automatically turns the car lights on and powers the control system to allow the car to be moved to the nearest floor either up or down, depending on the car position. The RED-G will then bring the car to floor level and park with the car doors open.

The RED-G can only operate when all the safety contacts are made.



## T-Smart Maxi MRL Control Panel

- Lift applications upto 45A
- Modular system up to 32 stops, APB, Down and Full Collective, Multiplex,
- CAN BUS communication with TKL inverter
- CAN BUS system for serial shaft & car
- Shaft positioning with existing motor encoder direct to floor
- Touchscreen LCD for system configuration and diagnostics
- Wireless Access Point to manage parameters with mobile phone, tablet or PC
- Software updating via PC
- Integrated led lighting system
- Serial and Parallel configuration
- Main switch, light switches (shaft and car) and power socket in the control panel
- Remote text operations (safety gear, buffers, brake etc).
- Overspeed governor in the shaft, controlled by key in control panel for test
- Built in automatic rescue system and electrical emergency operations
- Integrated manual electrical rescue operation with monitor of car at floor level, for rescue operation
- MRL Cabinet Dimension: 2200X300X230 mm
- Compliance with EN STANDARD as follows: 2014/33/UE - 2014/30/UE EN 81-20.
- Prewired kit for car

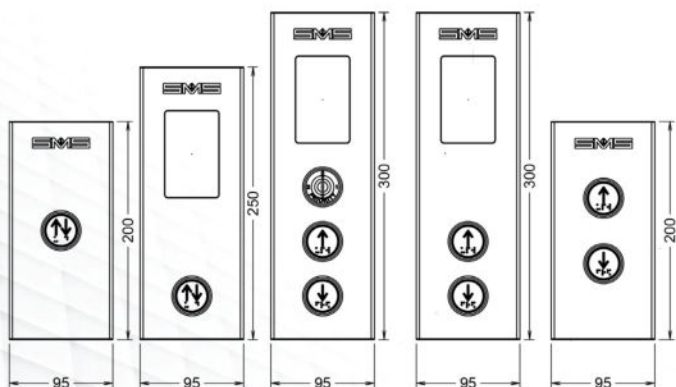
### DIMENSIONS

WIDTH	HEIGHT	DEPTH
350mm	2180/ 2230mm	230mm



## Calipso

- EN 81-70 and Braille (blue)
- Push plate (304 grade silver brushed stainless steel; PVD black or gold)
- Hardchrome plated diecast body, polycarbonate push plate body
- Warranty, 24 months (terms applied)
- 1 Million pressing rate at 20mA@24V non-inductive load
- Standard 95cm faceplate
- Wall mounting, cut out not required
- Optional: Finishes



## Modello Italia

- High contrast LEDs display
- Signal arrows in green and red colour
- Binary parallel input with both positive and negative logic.



# Atena

- EN 81-70 and Braille (blue)
- Push plate (304 grade silver brushed stainless steel; PVD black or gold)
- Hardchrome plated diecast body, polycarbonate push plate body
- Warranty, 24 months (terms applied)
- 1 Million pressing rate at 20mA@24V non-inductive load
- Standard 95cm faceplate
- Wall mounting, cut out not required
- Optional: Finishes



Black

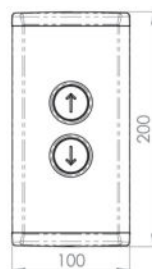
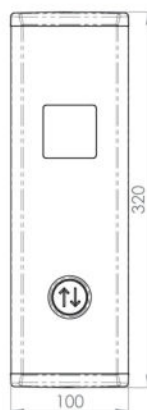
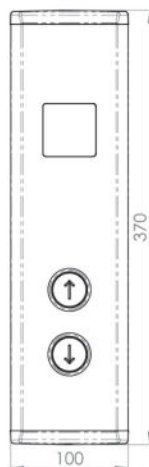
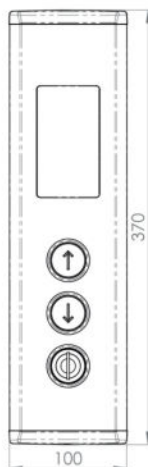
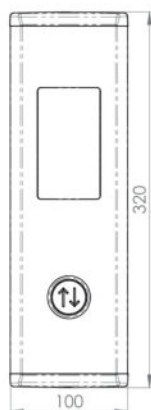
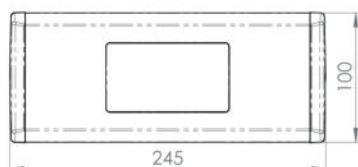


Mirror Gold



Scotch Brite Inox

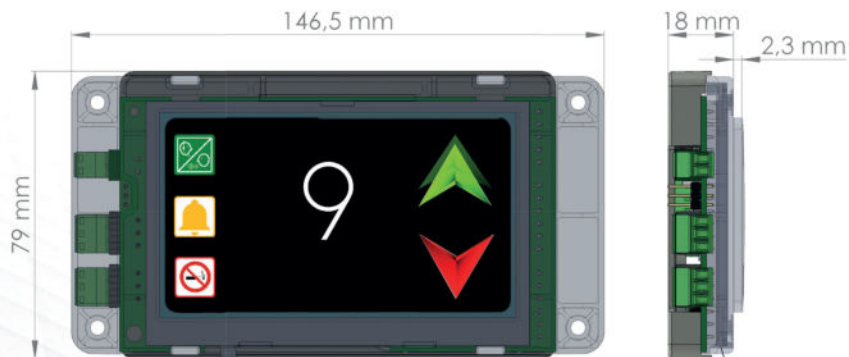
Other finishes available on request





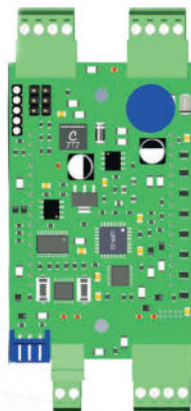
## Iride

- 4.3" inch TFT colour display
- Selectable fonts, background and arrows
- Horizontal and vertical mounting
- Parallel input with both positive and negative logic
- CAN bus interface (SMS proprietary protocol)
- Complete with enclosure ready for mounting
- Integrated buzzer



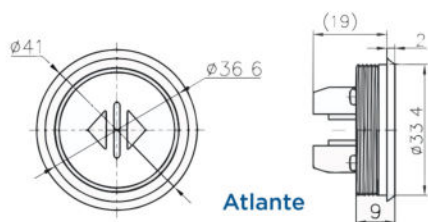
## Selene

- DOT matrix white high contrast LEDs
- Horizontal and vertical mounting
- CAN bus interface (SMS proprietary protocol)
- Programmable options

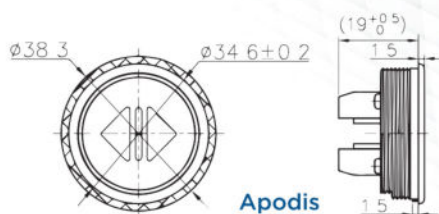


## Atlante

- EN 81-70, Braille (blue)
- Body: zamak push button (body and intergrated bezel)
- Bezels: stainless steel ( $\varnothing$  36,6 mm)
- Pressel: polycarbonate with black stainless steel AISI 304 or gold PDV coated finishes; tactile (raised) and illuminated legends
- Button is inserted into the cutout ( $\varnothing$  33.5mm) from the front and fixed by a threaded ring
- Faceplate Thickness: 0.7 mm to 5 mm
- Illumination: LED 24V
- Average life: 1000000 activations
- Protection: IP51.



Atlante



Apodis

## Apodis

- EN 81-70, Braille and non-Braille versions (red)
- Body: nylon push button
- Bezels: stainless steel ( $\varnothing$  34,6 mm)
- Pressel: stainless steel AISI 304 or gold PDV coated finishes; tactile (raised)
- Button is inserted into the cutout ( $\varnothing$  32.2mm) from the front and fixed by threaded a ring
- Faceplate Thickness: 0.7 mm to 5 mm
- Illumination: LED 24V
- Average life: 1000000 activations
- Protection: IP51.



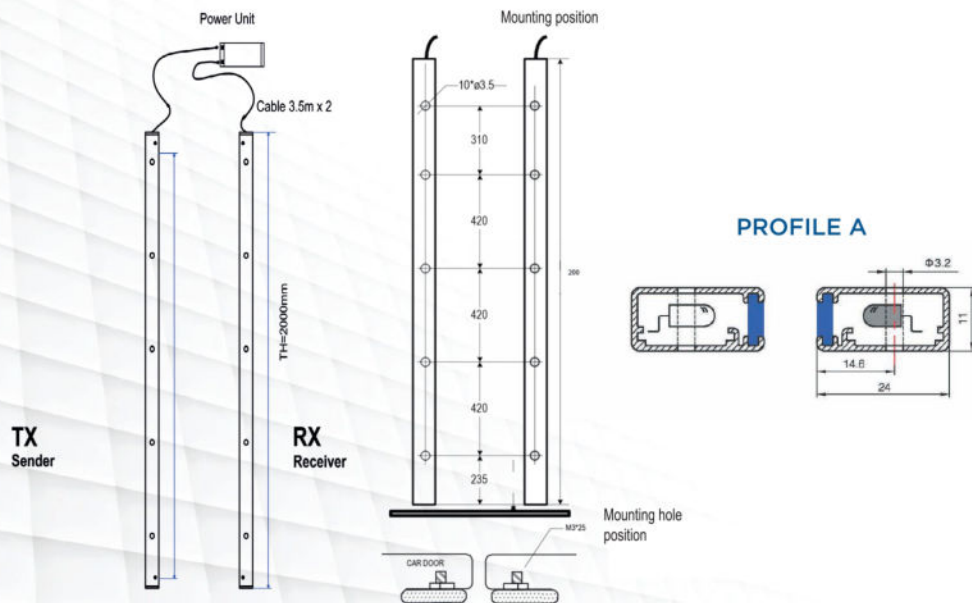


## LDC

LDC light curtains for lifts at high quality beams with anodized aluminium profile and LED indicator.

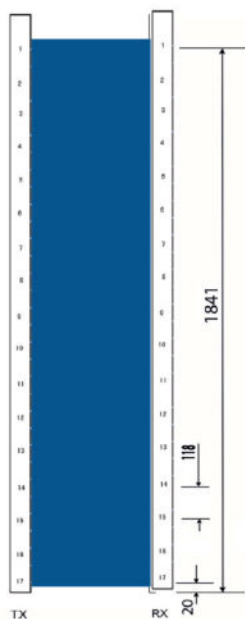
LDC 174 beams comply with EN 81-20 / EN 81-70.

- 94/154/174 Beams
- High ambient light immunity
- Operating range up to 4m
- Voice reminder

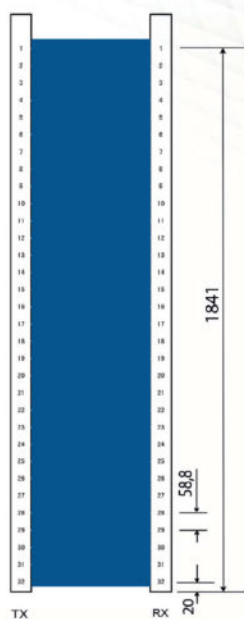


- Tolerance Up / Down: 315mm/7°
- Tolerance Back / Forth: 33mm/5°
- Detecting Range: 0-4m
- Operating Temperature: -20°C-+65°C
- Light Immunity: 100000Lux
- Protection Level: IP54
- Voice reminder after continuous detection for 15s
- Buzzer ON.

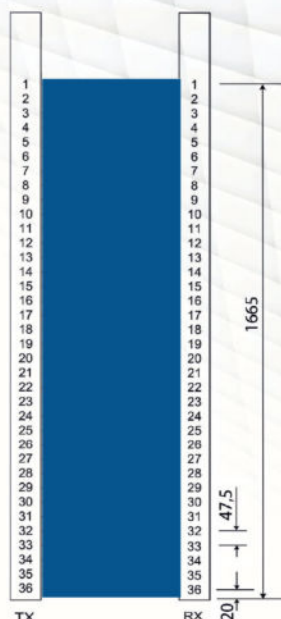
### 17 DIODES



### 32 DIODES



### 36 DIODES



DEVICE / CODE	WIDTH	HEIGHT	DEPTH	WEIGHT
LDCA17-LDCA32 (EN 81&20) LDCB36	24mm	2000mm	11mm	2Kg

### ORDER INFORMATION - DEVICE CODES

LDCA17-AC3-DC24A - PROFILE A LIFT DOOR CURTAIN 17 DIODES DC24A: 24vdc ±10%, relay output 1NO/1NC
LDCA17-AC3-AC220 - PROFILE A LIFT DOOR CURTAIN 17 DIODES AC220V ±15%, 50/60HZ, relay output 1NO/1NC
LDCA32-AC3-DC24A - PROFILE A LIFT DOOR CURTAIN 32 DIODES DC24A: 24vdc ±10%, relay output 1NO/1NC
LDCA32-AC3-AC220 - PROFILE A LIFT DOOR CURTAIN 32 DIODES AC220V ±15%, 50/60HZ, relay output 1NO/1NC
LDCB36-AC3-DC24A - PROFILE A LIFT DOOR CURTAIN 36 DIODES DC24A: 24vdc ±10%, relay output 1NO/1NC
LDCB36-AC3-AC220 - PROFILE A LIFT DOOR CURTAIN 36 DIODES AC220V ±15%, 50/60HZ, relay output 1NO/1NC



 200mm AND 300mm

**RQ200 / RQ300**

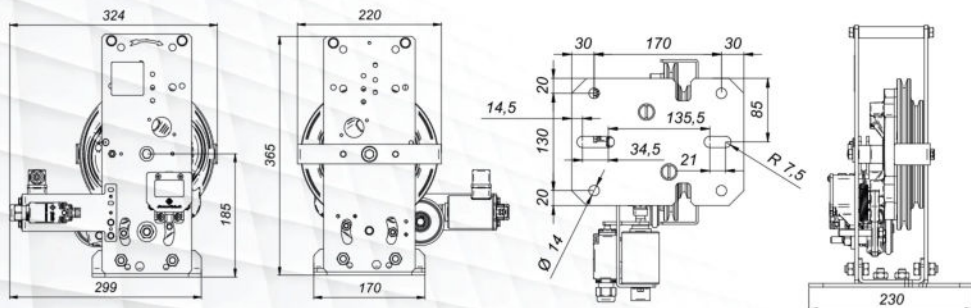
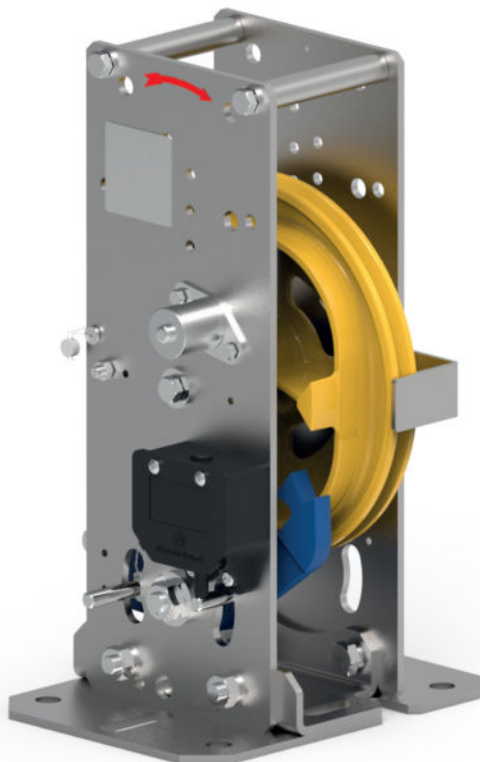
Overspeed Governor  
(Bi-Directional)  
with Test-Groove



2.00 M/S (MAX)  
CONTRACT  
SPEED RANGE



3.00 M/S (MAX)  
CONTRACT  
SPEED RANGE



 200mm AND 300mm

**M2 / M3**

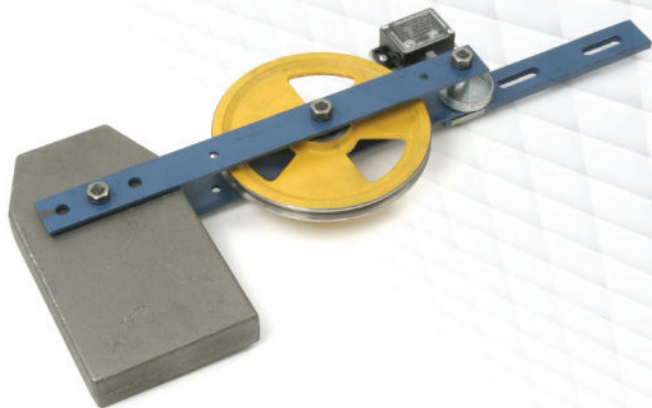
Bi-Directional Tension weight  
incl. switch



WITH SWITCH  
AS STANDARD



BI DIRECTIONAL



**TEV200 / 300 BD**

T/Frame inc. Switch (to suit  
Bi-Directional Governor)

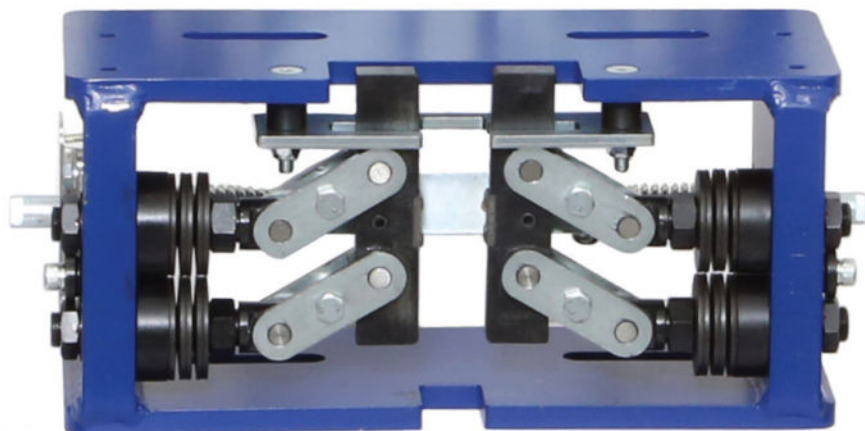


WITH SWITCH  
AS STANDARD



BI DIRECTIONAL





SIMPLE TO INSTALL  
AND MAINTAIN



NO ROPE  
CLAMP NEEDED



DRIVE OUT  
RELEASE

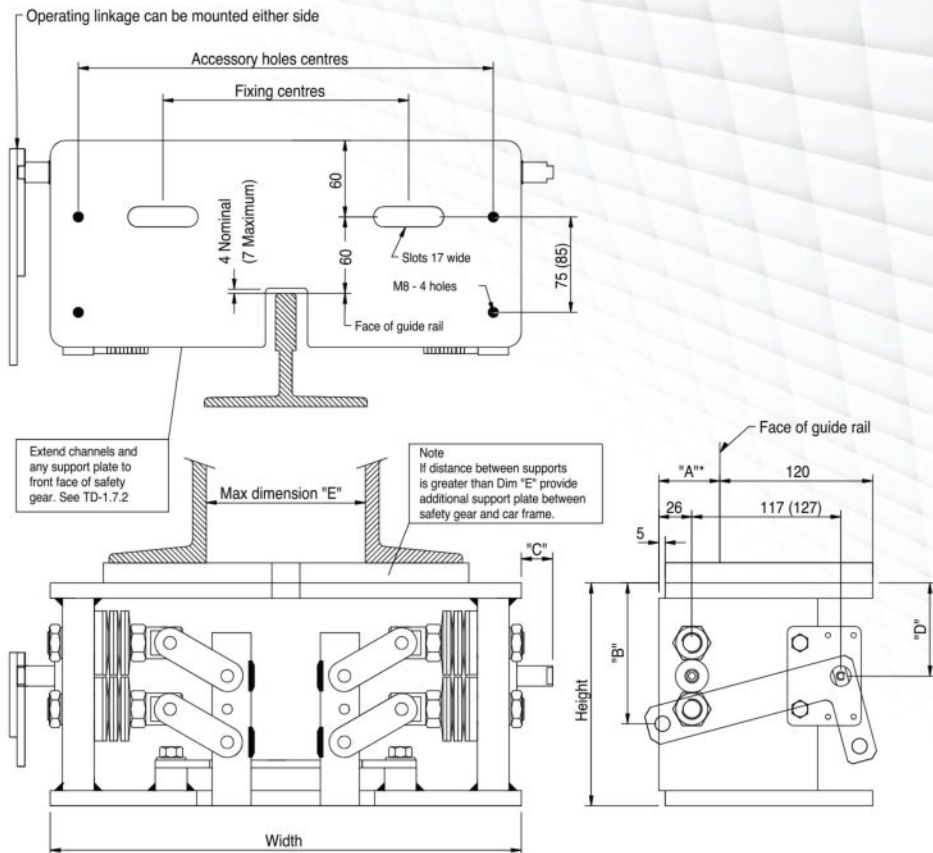


MULTIPLE RE USE  
AFTER ACTIVATION



UK  
MANUFACTURED

DATA		SINGLE DIRECTION*
MAX SPEED	MAX P+Q LOAD	MOUNTING KIT
1m/s	3500Kg	TD1.10.1 / TD1.10.3
2m/s	3000Kg	TD1.10.1 / TD1.10.3
3m/s	2550Kg	TD1.10.1 / TD1.10.3



DIMENSIONS			
WIDTH	370	DIM A	41
FIXING CENTRES	186	DIM B	115
SLOT LENGTH	70	DIM C	25
ACCESSORY CENTRES	328	DIM D	77
HEIGHT	176	DIM E	125



SIMPLE TO INSTALL  
AND MAINTAIN



NO ROPE  
CLAMP NEEDED



DRIVE OUT  
RELEASE

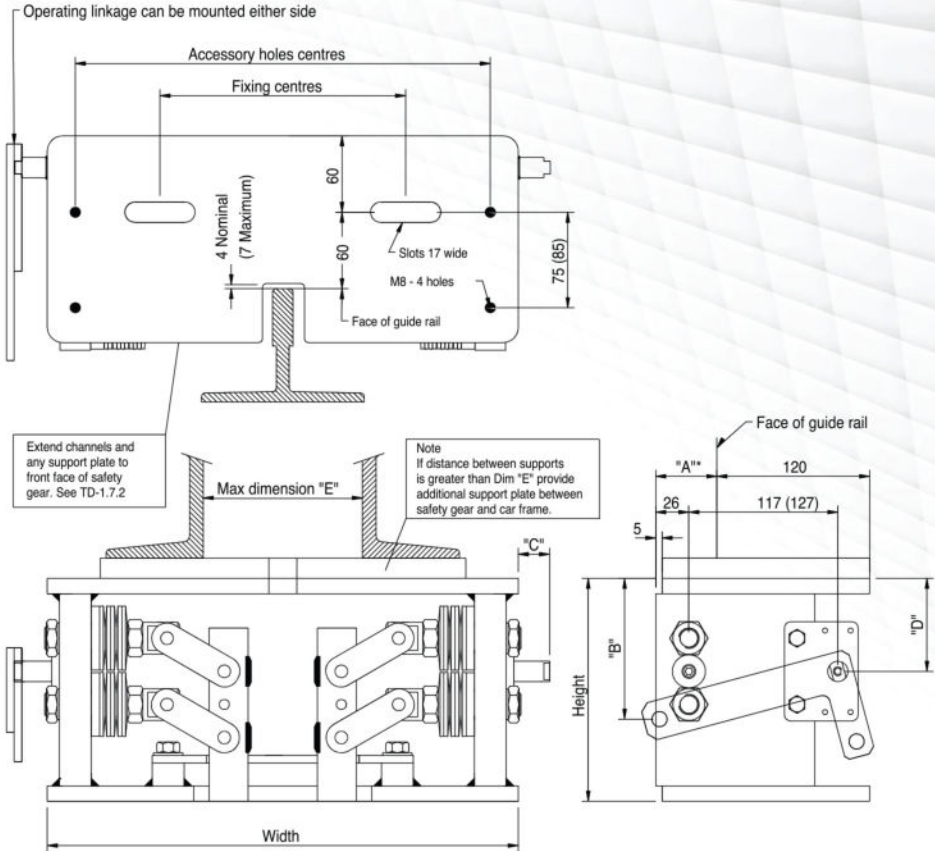


MULTIPLE RE USE  
AFTER ACTIVATION



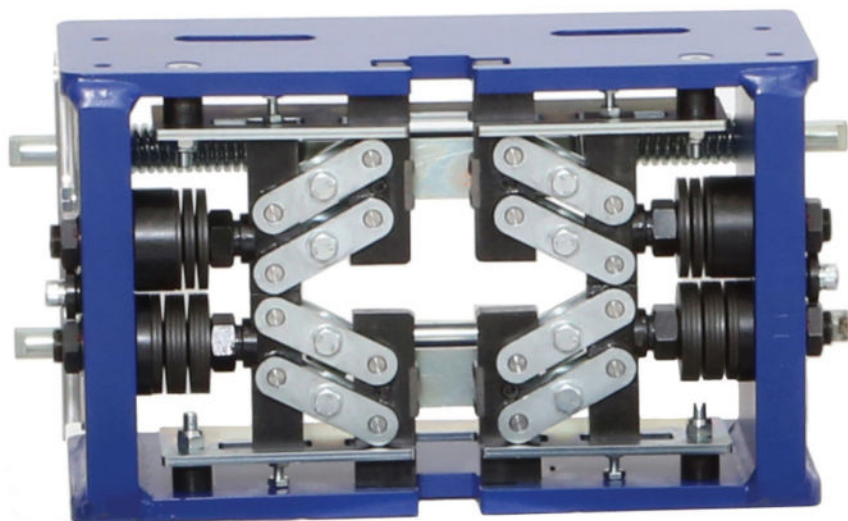
UK  
MANUFACTURED

DATA		SINGLE DIRECTION*
MAX SPEED	MAX P+Q LOAD	MOUNTING KIT
1m/s	1810Kg	TD1.4
2m/s	1639Kg	TD1.4
3m/s	1477Kg	TD1.4



DIMENSIONS			
WIDTH	270	DIM A	41
FIXING CENTRES	140	DIM B	99
SLOT LENGTH	45	DIM C	30*
ACCESSORY CENTRES	238	DIM D	61
HEIGHT	144	DIM E	100

Note: The VG-4 can have an extended shaft increased to 75. Dim A can be increased to 51 for rails T127-1/B and above.



SIMPLE TO INSTALL  
AND MAINTAIN



NO ROPE  
CLAMP NEEDED



DRIVE OUT  
RELEASE



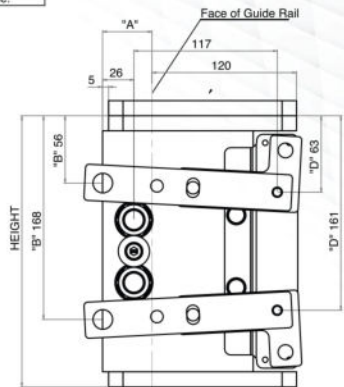
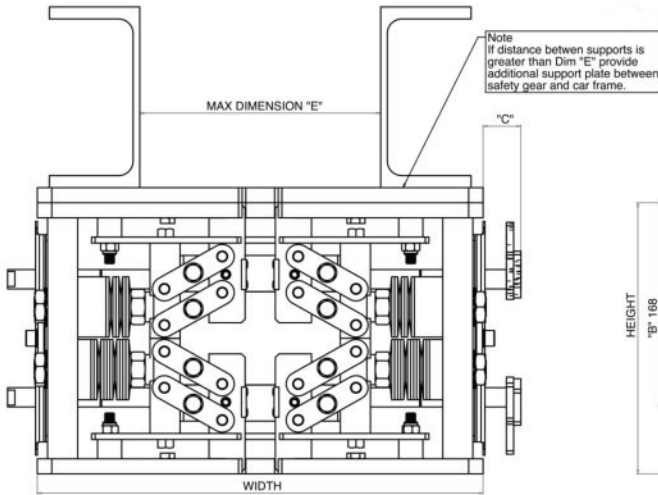
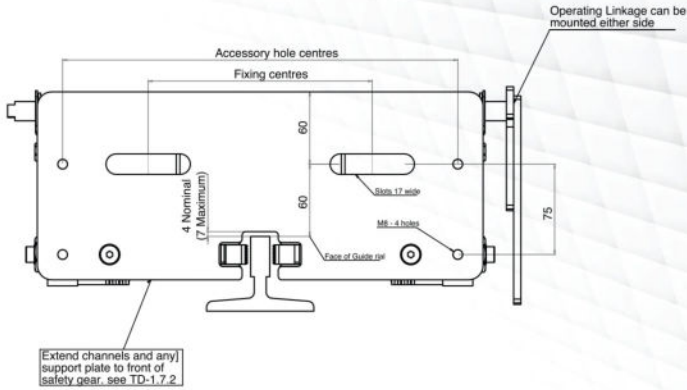
MULTIPLE RE USE  
AFTER ACTIVATION



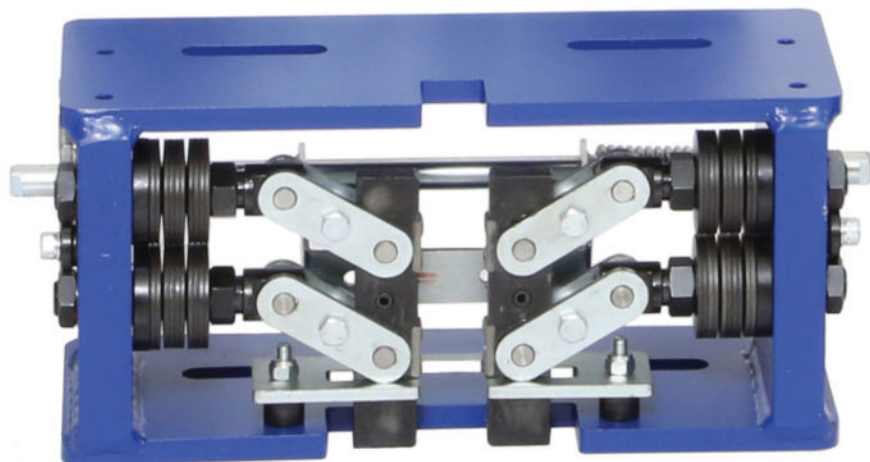
UK  
MANUFACTURED

DATA		BI-DIRECTIONAL
MAX SPEED	MAX P+Q LOAD	MOUNTING KIT
1m/s	2405Kg	TD1.71
2m/s	2145Kg	TD1.71
3m/s	1900Kg	TD1.71

# DATA SHEET | SAFETY GEAR - VG5



DIMENSIONS			
WIDTH	370	DIM A	41
FIXING CENTRES	186	DIM B	56/168
SLOT LENGTH	70	DIM C	25
ACCESSORY CENTRES	328	DIM D	63/161
HEIGHT	225	DIM E	200



SIMPLE TO INSTALL  
AND MAINTAIN



NO ROPE  
CLAMP NEEDED



DRIVE OUT  
RELEASE

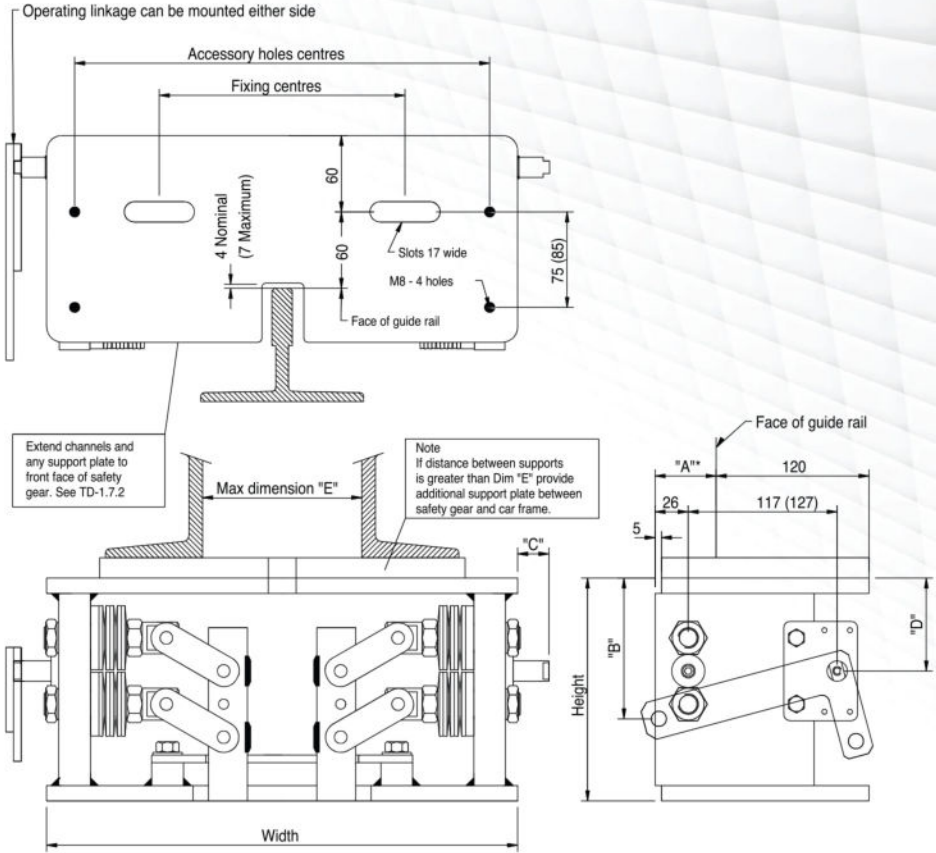


MULTIPLE RE USE  
AFTER ACTIVATION

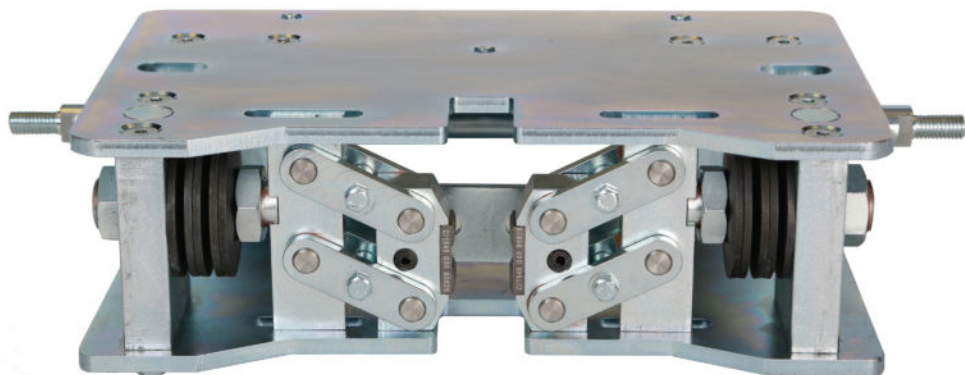


UK  
MANUFACTURED

DATA		BI-DIRECTIONAL
MAX SPEED	MAX P+Q LOAD	MOUNTING KIT
1m/s	5400Kg	TD1.4 / TD1.10.1 / TD1.10.3
2m/s	4600Kg	TD1.4 / TD1.10.1 / TD1.10.3
3m/s	4000Kg	TD1.4 / TD1.10.1 / TD1.10.3



DIMENSIONS			
WIDTH	370	DIM A	41
FIXING CENTRES	186	DIM B	115
SLOT LENGTH	70	DIM C	25
ACCESSORY CENTRES	328	DIM D	77
HEIGHT	176	DIM E	100



SIMPLE TO INSTALL  
AND MAINTAIN



NO ROPE CLAMP  
NEEDED



DRIVE OUT  
RELEASE

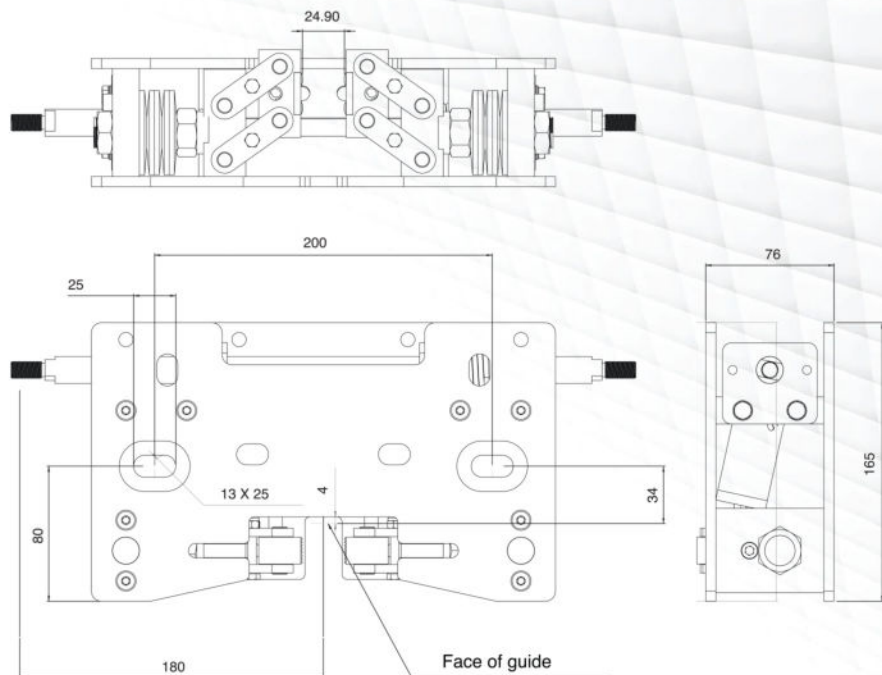


MULTIPLE RE USE  
AFTER ACTIVATION



UK  
MANUFACTURED

DATA		SINGLE DIRECTION
MAX SPEED	MAX P+Q LOAD	MOUNTING KIT
2.63m/s	2654Kg	TD8.4 / TD8.5



DIMENSIONS	
	VG8
MINIMUM MASS	1009Kg
MAX (P+Q) TRIP @ 1m/sec	3158Kg
MAX (P+Q) TRIP @ 2m/sec	2853Kg
MAX (P+Q) TRIP @ 2.63m/sec	2654Kg
GUIDE RAILS	T73-T89 Dry or Oiled
WEIGHT	7.3kg per unit
HEIGHT	76mm
FIXING CENTRES	200mm
SLOT LENGTH	25mm



**LSB 10**  
Oil Buffer



1.0 M/S MAX  
RATED SPEED



370-2000KG  
LOAD RANGE



COMPACT &  
LIGHTWEIGHT



QUICK & EASY  
INSTALLATION



PRECHARGED  
WITH OIL



COMMON  
APPLICATION

**\* Available from stock**

Reduced stroke: Rated speed with terminal speed limiting device, based on ASME A17.1 rule 2.22.4.1.2

MODEL	LSB 10*	SEB 16*	SEB 18	SEB 20	SEB 25*
Rated Speed - m/s	1.00	1.60	1.80	2.03	2.54
Maximum Speed (115%) - m/s	1.15	1.84	2.07	2.33	2.92
Stroke (min) - mm	73.3	173	219	279	435
Impact Mass Range - Kg	380-3250	450-4545	450-4545	450-4545	450-4545
Height (fully extended) - mm	222	540	643	777	1126
Weight (dry) - Kg	3.6	11.2	12.8	14.8	20.0
Oil Volume - litres	0.5	1.5	1.8	2.2	3.3
Reduced Stroke (ASME A17.1) - m/s	1.47	2.26	2.54	2.87	3.59

## SEB 16

Oil Buffer



1.6 M/S MAX  
RATED SPEED



450-4545KG  
LOAD RANGE



QUICK & EASY  
INSTALLATION



## SEB 18

Oil Buffer



1.8 M/S MAX  
RATED SPEED



450-4545KG  
LOAD RANGE



QUICK & EASY  
INSTALLATION



## SEB 25

Oil Buffer



2.54 M/S MAX  
RATED SPEED



450-4545KG  
LOAD RANGE



QUICK & EASY  
INSTALLATION



## LB 16

Oil Buffer



1.6 M/S MAX  
RATED SPEED

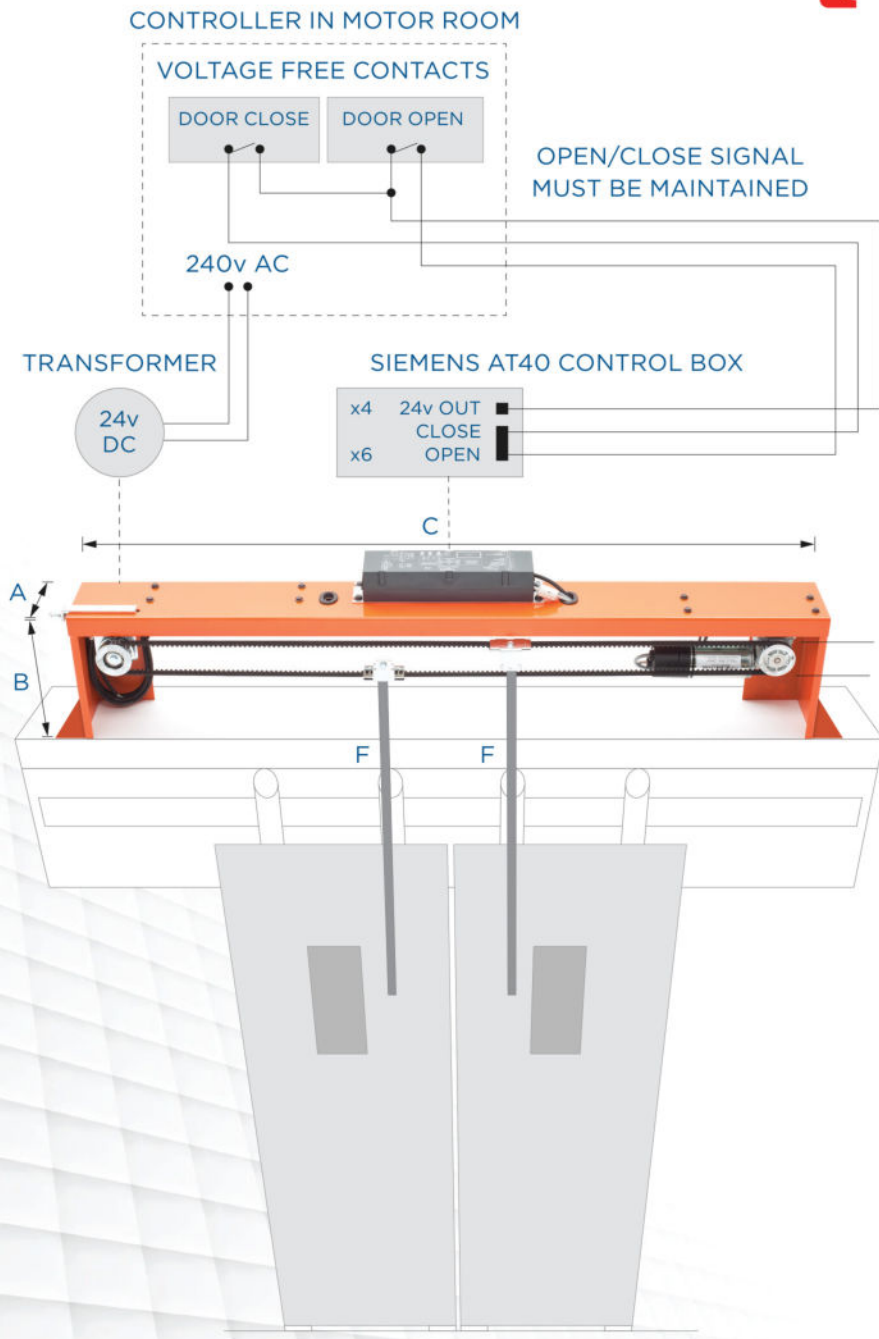


500-8330KG  
LOAD RANGE



QUICK & EASY  
INSTALLATION





## GENERAL DATA



FULLY  
ASSEMBLED



COMPACT  
DIMENSIONS



LOW NOISE  
DRIVEBELT



IDEAL FOR  
LINEAR SYSTEMS



400KG MAX  
DOOR WEIGHT



SPEED  
CONTROLLED\*



NO LIMIT  
SWITCHES

### SUPPLIED WITH

Universal Fixing Brackets

3 Year Warranty

Belt/Panel Connecting Bar

### DIMENSIONS

A (Depth)	130mm
B (Height)	240mm
C (700-900)	1260mm
C (900-1100)	1460mm
D (Car to Belt)	140mm
E (Pulley)	55mm
F (Door pick up by others)	



2 PANEL CENTRE  
OPENING



2 PANEL SIDE  
OPENING

APPLICATIONS INCLUDE\*\* - Dupar, Express, Kone, Otis, Schinder, Sematic,  
Others on request.

Site specific modifications maybe required.

\*Uniform door opening on all floors.

\*\*May be dependent on model.







## SPARES



SLS OFFER SPARE PARTS FOR 20 YEARS AFTER PRODUCTION CEASES.

## SUPPORT



TECHNICAL SUPPORT AT  
POINT OF ENQUIRY  
AND POST SUPPLY



DECADES  
OF TRADING  
HISTORY



JOB SPECIFIC GEAR,  
GEARLESS AND RAFT  
CALCULATIONS



5 YEAR  
WARRANTY  
AS STANDARD

## SERVICES



MACHINE SPLIT FOR EASE  
OF ACCESS AND  
RE-ASSEMBLY ON SITE



IN-DEPTH  
SITE SURVEYS



TECHNICAL DRAWINGS  
PRIOR TO FINAL  
PROJECT SIGN OFF



**SASSI**  
LIFT SYSTEMS

### Sassi Lift Systems Ltd

5 Blackwell Drive,  
Springwood Industrial Estate,  
Braintree, Essex, CM7 2QJ, UK

T 01376 550666  
E sales@sls-ltd-co.uk  
W sls-ltd.co.uk

# If you've been here...



## ...you've been transported by a **Sassi Machine!**

When traveling on the London Underground you're never to far away from a historical building or place of interest. As a snapshot the graphic above is an indicator of sites within London where an Alberto Sassi Geared or Gearless machine has been installed.

SLS has a national presence across the UK, with machines installed in modernisation, repair and new lifts. From Lands End to John O'Groats, Londonderry to Cork rest assured that any Alberto Sassi machine supplied will include the support of SLS with the reassurance of our strong ethos and proven record of Customer Service and satisfaction ensuring that whatever your project you get the correct machine that is 'fit for purpose' - first time every time!





**Sassi Lift Systems Ltd**

5 Blackwell Drive,  
Springwood Industrial Estate,  
Braintree, Essex, CM7 2QJ, UK

**T** 01376 550666  
**E** sales@sls-ltd-co.uk  
**W** sls-ltd.co.uk



SASSI HOLDING S.P.A